



Windows Driver Manual

TP80 Series

Rev. 1.5

Xiamen Hanin Electronic Technology Co,Ltd.

Tel: +86-(0)592-5885991

WEB: www.hpert.com

CONTENTS

1. Manual Information.....	1
2. Operating System (OS) Environment.....	1
3. Windows Driver Preparation.....	2
4. Windows Driver Installation.....	3
5. Detailed Windows Driver Setting.....	7
5.1. Printing Preferences.....	7
5.2. Other Settings.....	43
6. Uninstall Windows Driver.....	47
7. Specification.....	49

1. Manual Information

This Windows Driver Installation Manual provides information on installation, detailed specifications, and usage of the printer's Windows Driver according to PC operating system (OS).

We maintain ongoing efforts to enhance and upgrade the functions and quality of all our products. As follows, product specifications and/or user manual content may be changed without prior notice.

2. Operating System (OS) Environment

The following operating systems are supported for usage.

- Microsoft Windows 10 (32 bit/64 bit)
- Microsoft Windows 8 (32 bit/64 bit)
- Microsoft Windows 7 SP1 (32 bit/64 bit)
- Microsoft Windows Vista SP2 (32 bit/64 bit)
- Microsoft Windows XP Professional SP3 (32 bit)
- Microsoft Windows Server 2012 (64 bit)
- Microsoft Windows Server 2008 R2

3. Windows Driver Preparation

The Windows Driver is included in the enclosed CD. If the order doesn't include the CD, please follow the link <http://www.hpvt.com/Downloads.html> and find the product name you want (for example TP808), then you can download Windows Driver and other items.

The Windows Driver installation file name is HPRT_POS_Printer_Driver-v-X.X.X.X.exe

X.X.X.X indicates the version number, which is updated from time to time.

Eg. : HPRT_POS_Printer_Driver_v2.7.3.0.exe

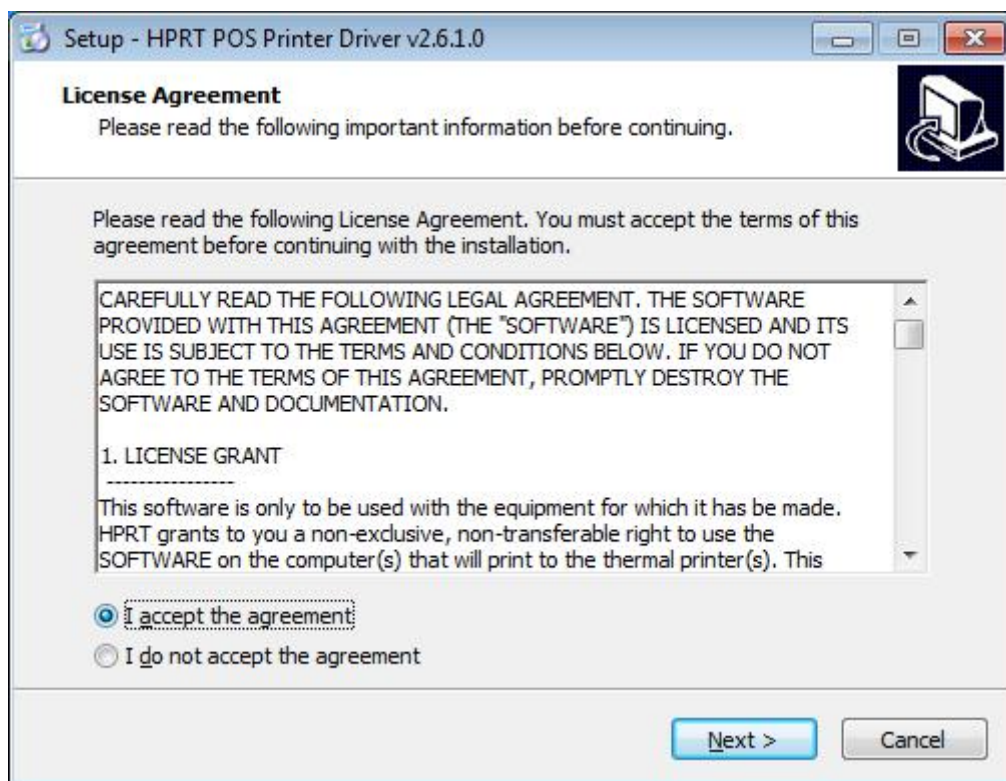
4. Windows Driver Installation



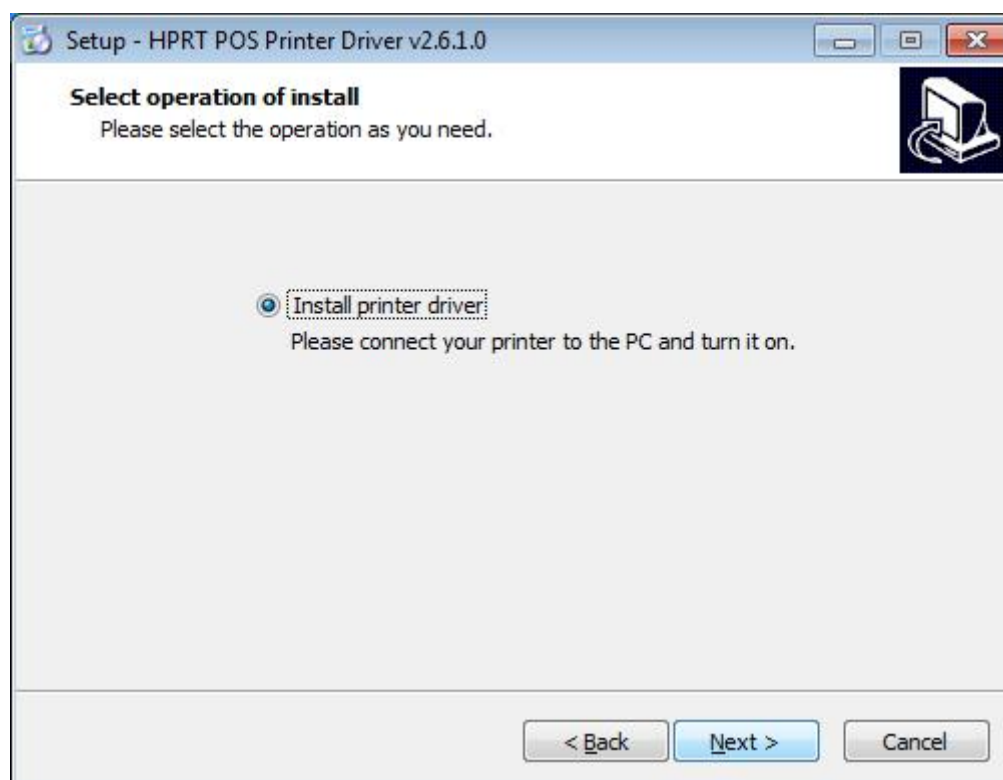
Warning:

Under different operating system, the screen has slight difference. Please operate it according to the tips. Take TP808 (Windows 7) as example.

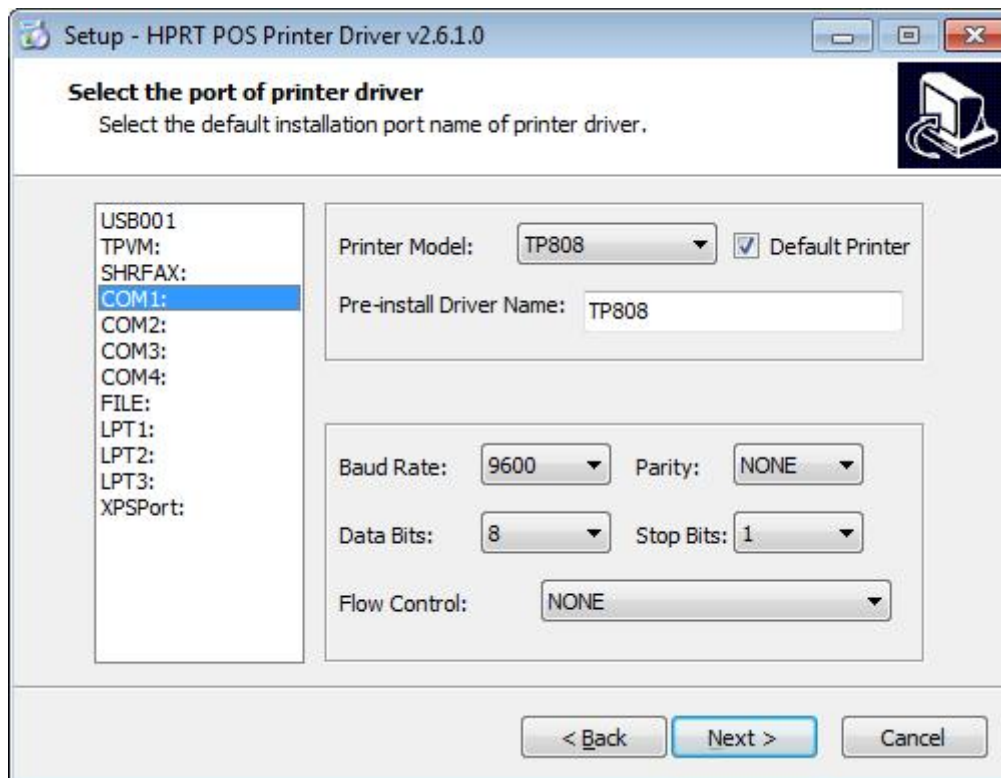
- (1) Double click Windows Driver.
- (2) Choose "I accept the agreement" and click
- (3) "Next".



(4) Click “Next”

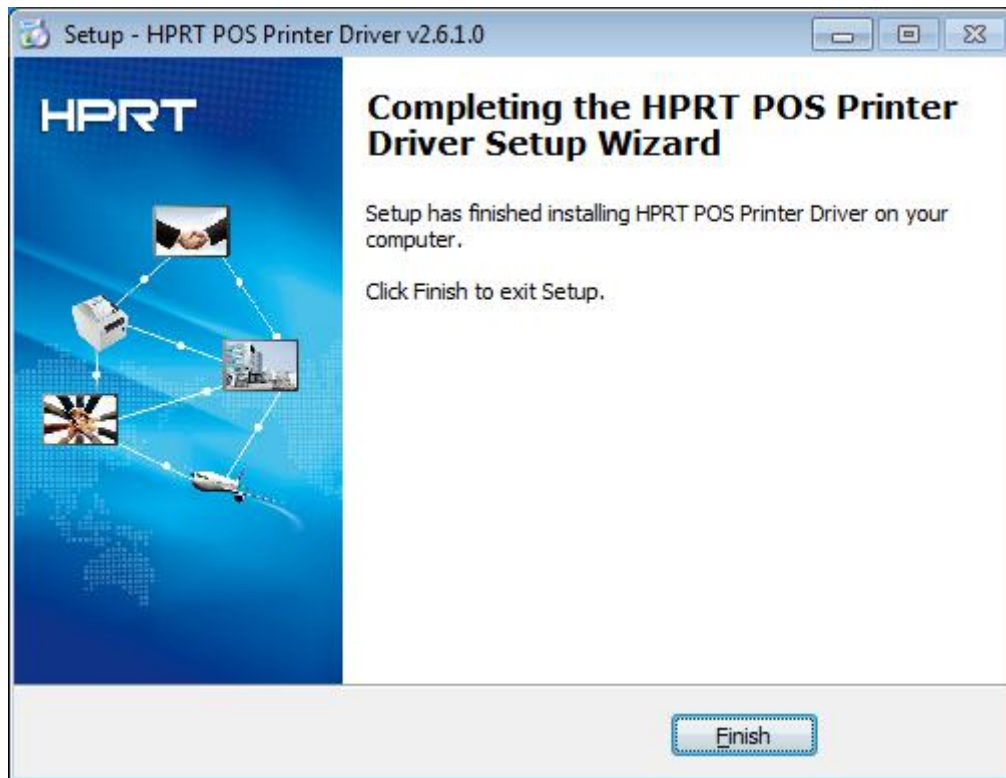


- (5) Choose the matched type and port (USBxxx is for USB port, COMx is for serial port, LPTx is for parallel port). Choose the type and port of driver, such as "COM1" as port. Click "Next".



NOTE: If printer is already connected with computer by USB port, it only needs to click "Install", then it will be installed automatically. Otherwise, proceed to the next step.

- (6) Click "Finish". POS printer driver is installed successfully.



- (7) After installation, the icon will be found in "Start" → "Devices and Printers".

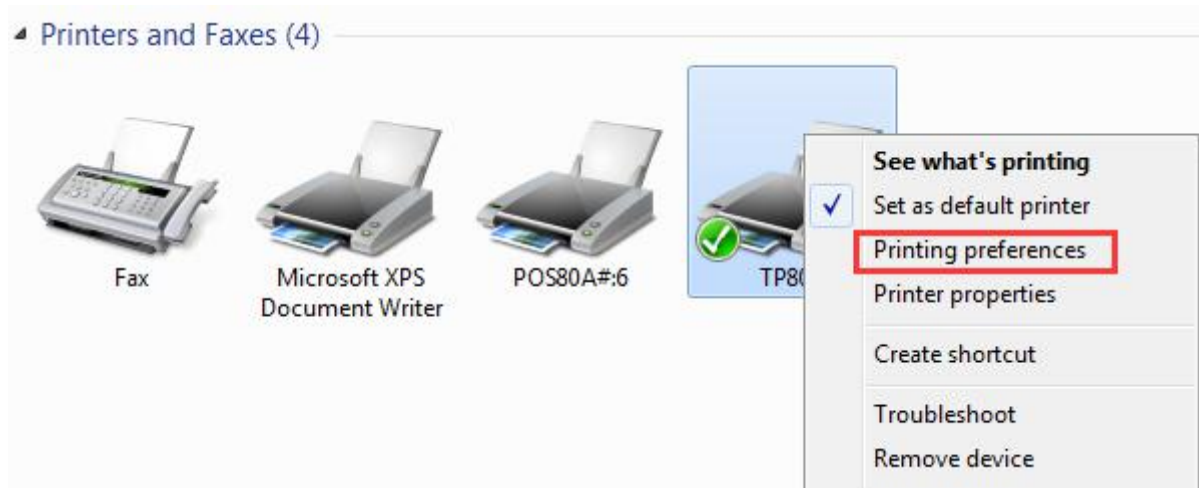


NOTE: If you already installed the driver (No matter what kind of port), when you connect the printer with computer, it will create a USB port automatically.

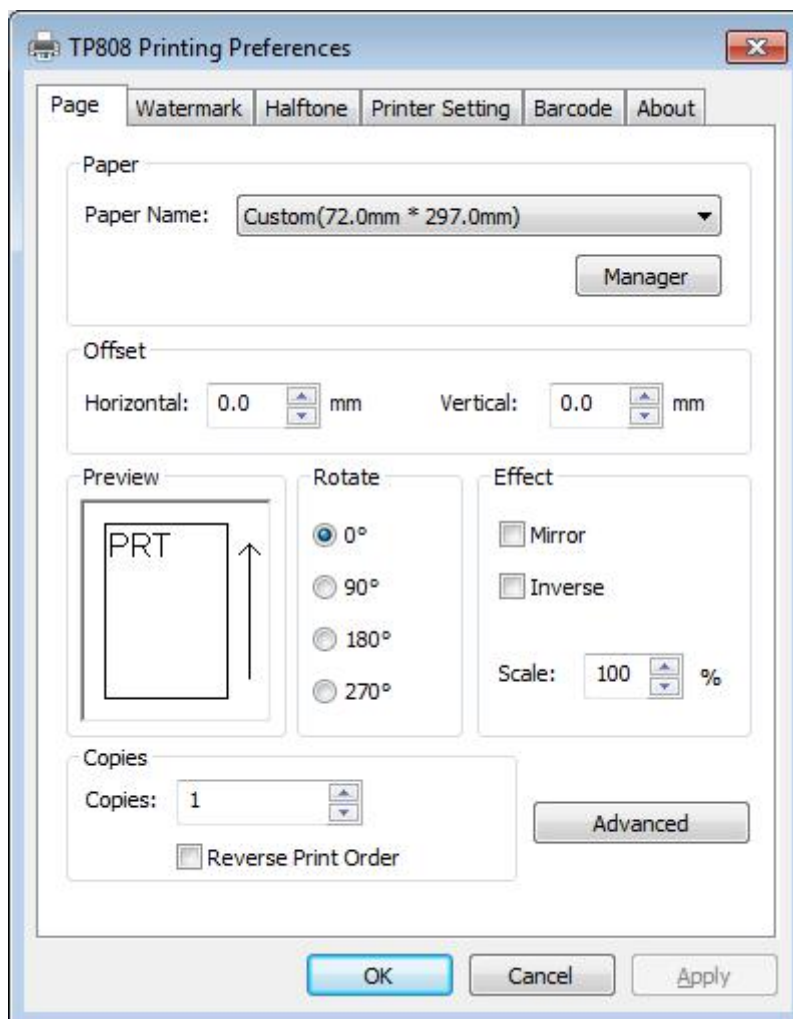
5. Detailed Windows Driver Setting

5.1. Printing Preferences

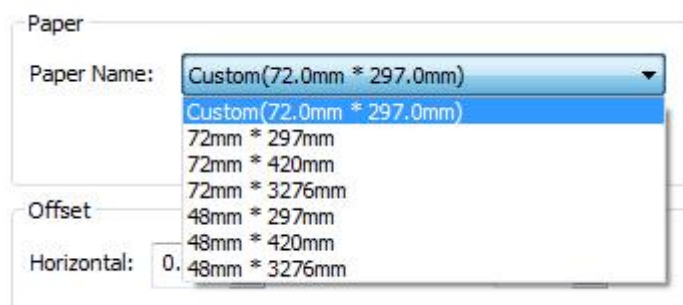
1. Click "Start" → "Devices and Printers". Right click "TP808" and choose "Printing preferences".



2. According to the different needs, choose "Paper"\'\'Offset"\'\'Rotate"\'\'Effect"\'\'Copies" in "Page".



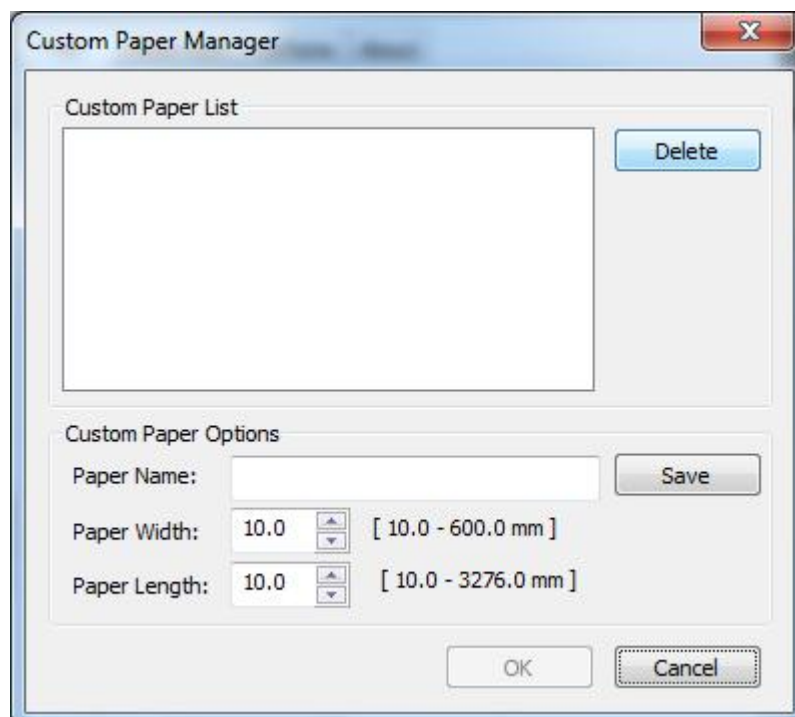
1) Paper



2) Offset

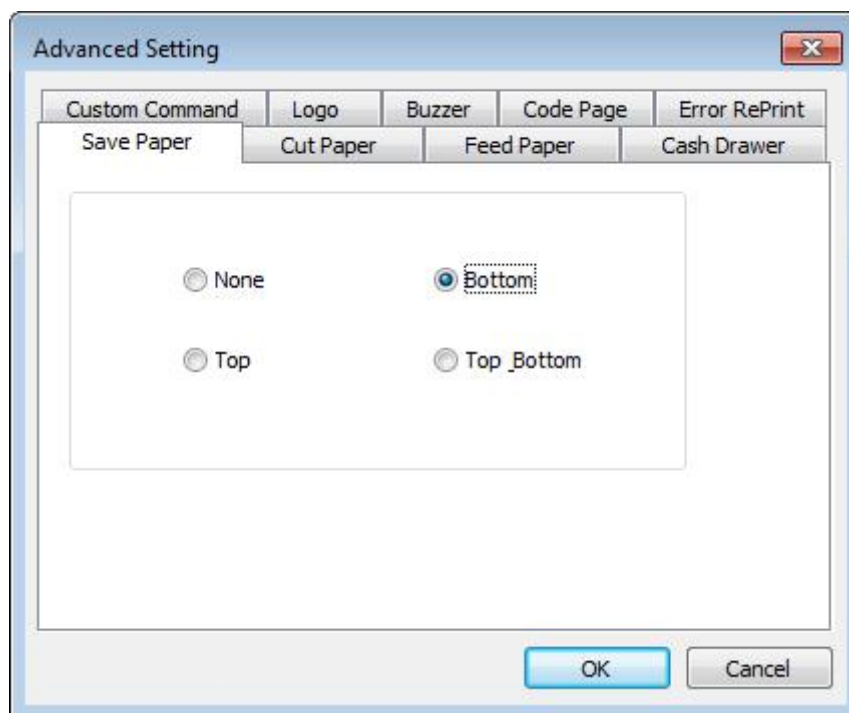


- Click “Manager”, add or delete paper.

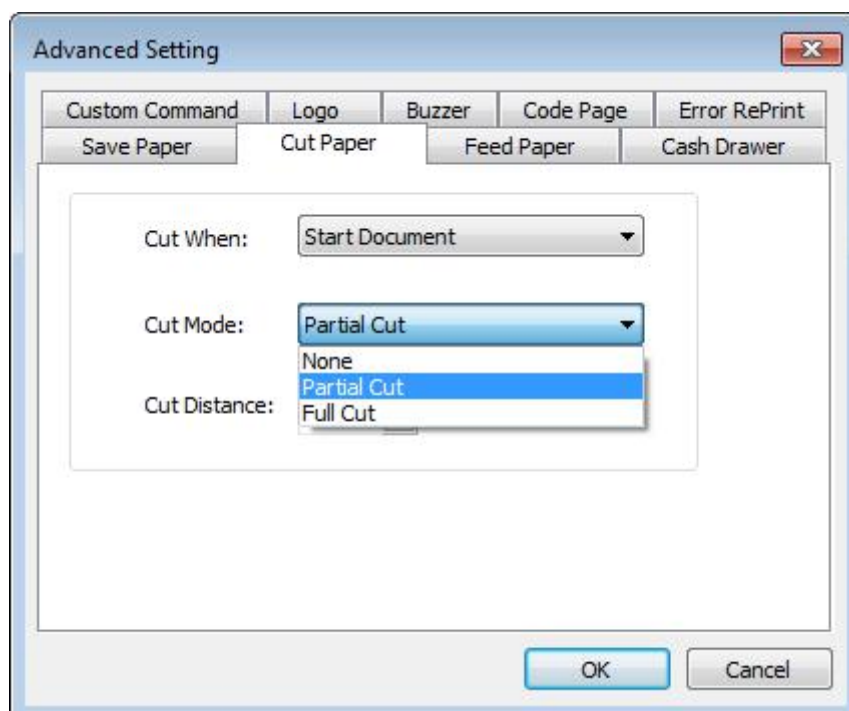
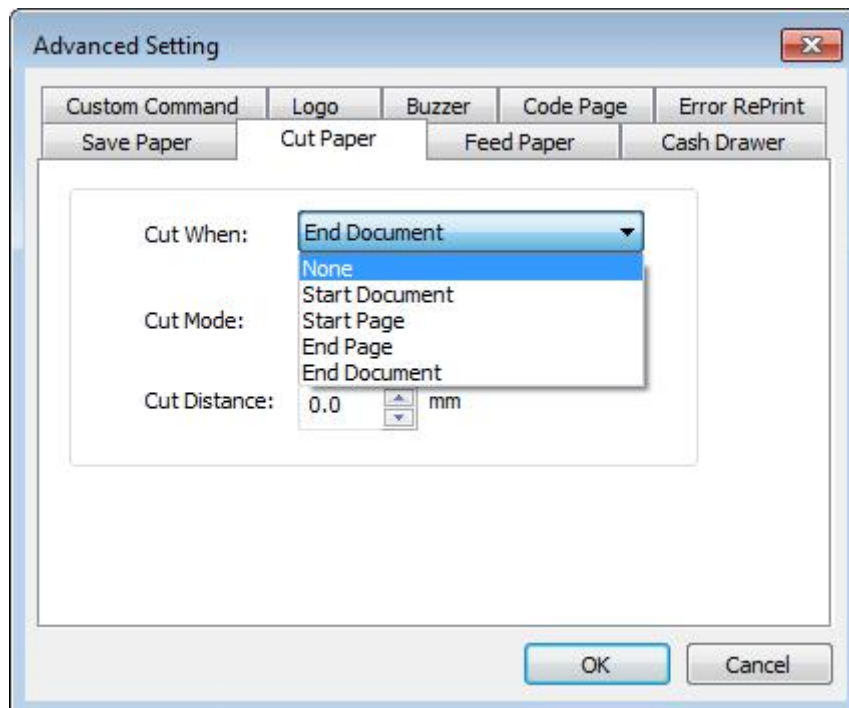


- Click “Advanced” to set “Save Paper”、“Cut Paper”、“Feed Paper”、“Cash Drawer”、“Custom Command”、“Logo”、“Buzzer”、“Code Page”.

1) Save Paper

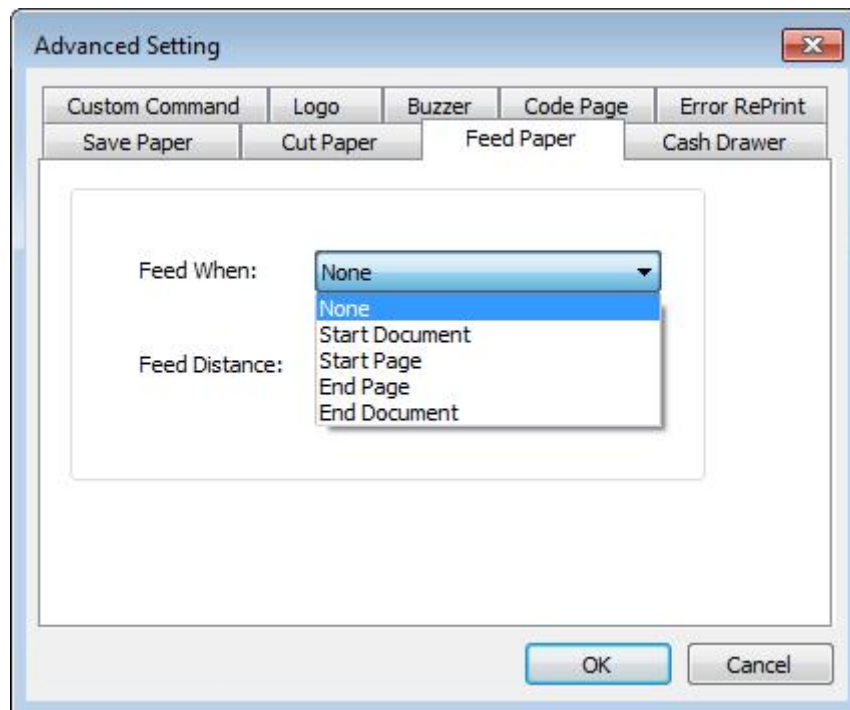


2) Cut Paper



Cut Distance: 0/5/10/15/20mm (End Document)

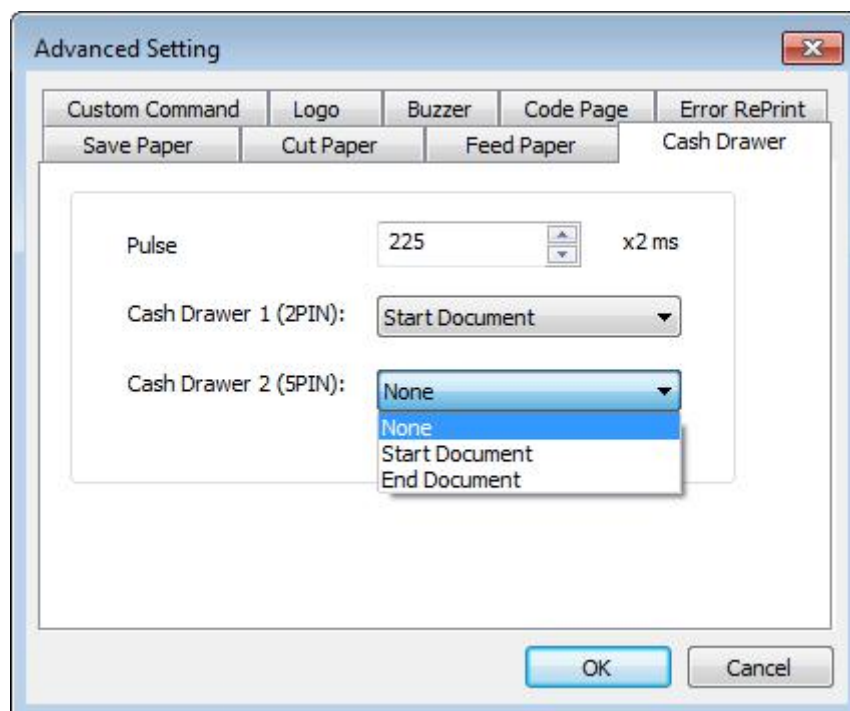
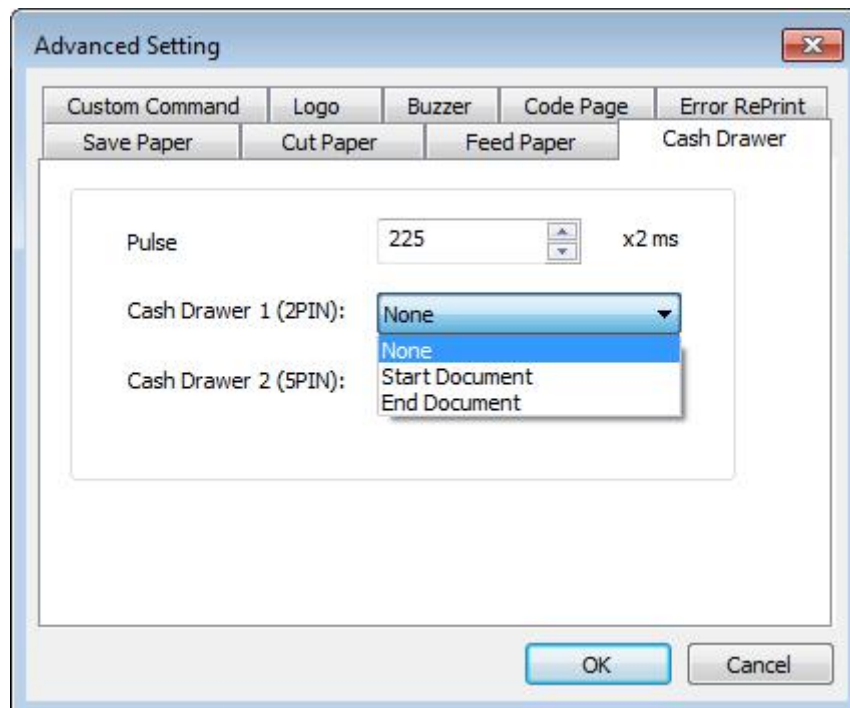
3) Feed Paper



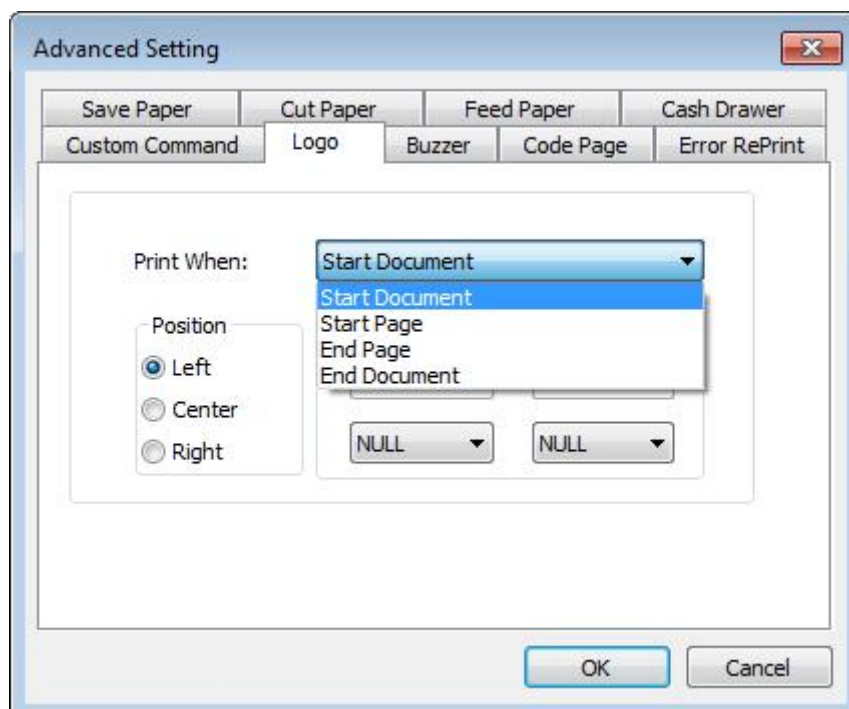
Feed Mode: Feed Automatically/Cut Automatically/Cut Automatically Per Page/None

Feed Distance: 0/5/10/15/20mm (End Document)

4) Cash Drawer

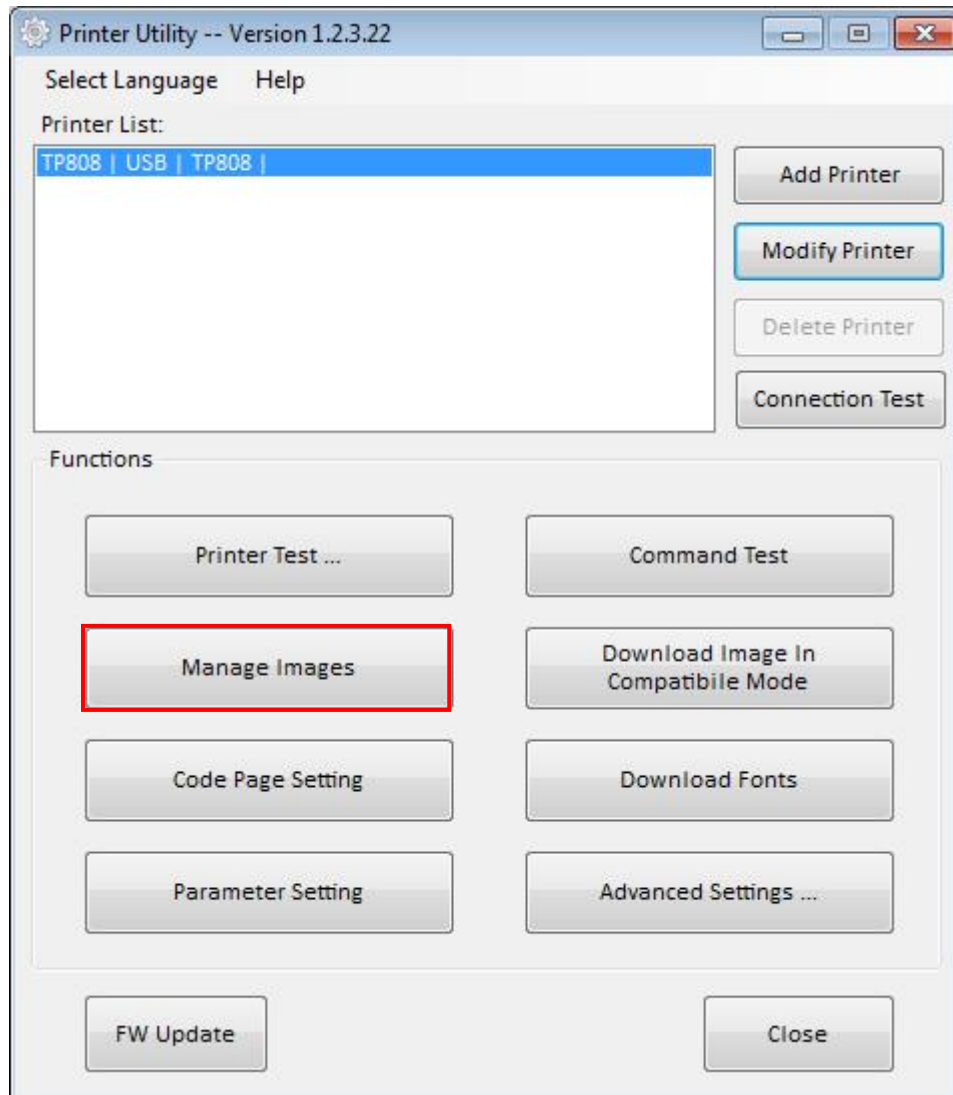


5) Logo



Note: this setting need to be set in utility, here are the steps.

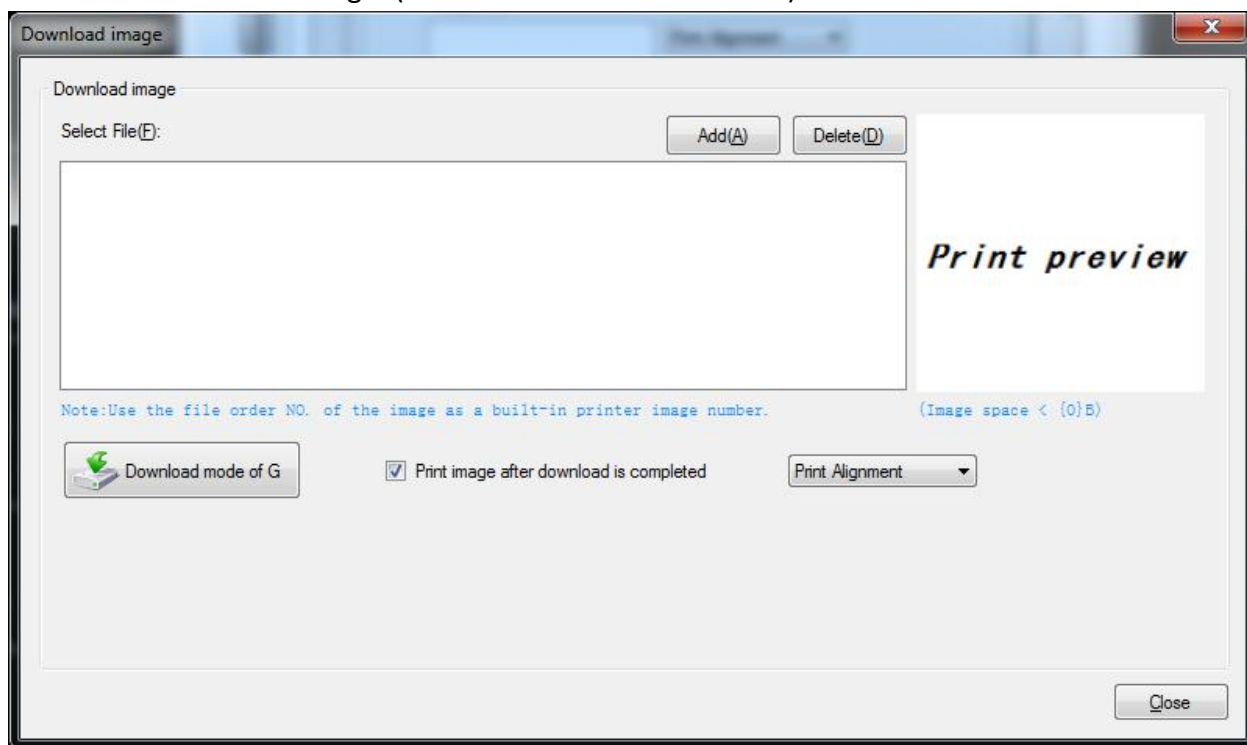
- 1) Open the utility and click "Manage Images".



2) Click "Download".

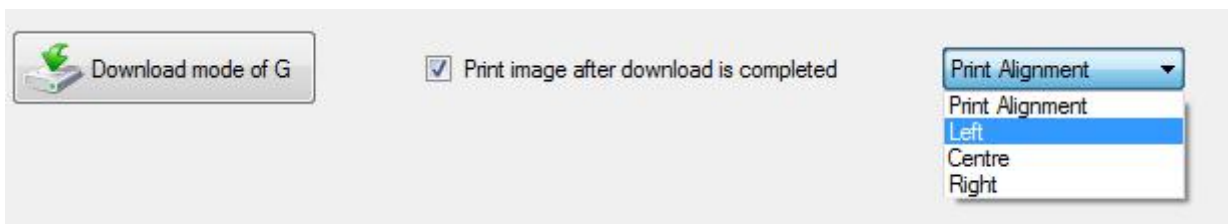


3) Click "Add" to add a logo. (BMP format is recommended)



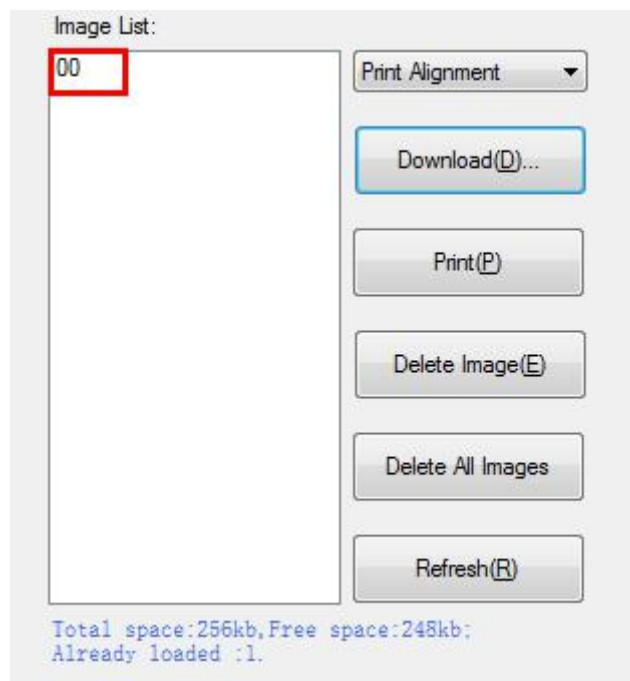


4) Select the print location, and then click "Download mode of G". (Such as: left print)

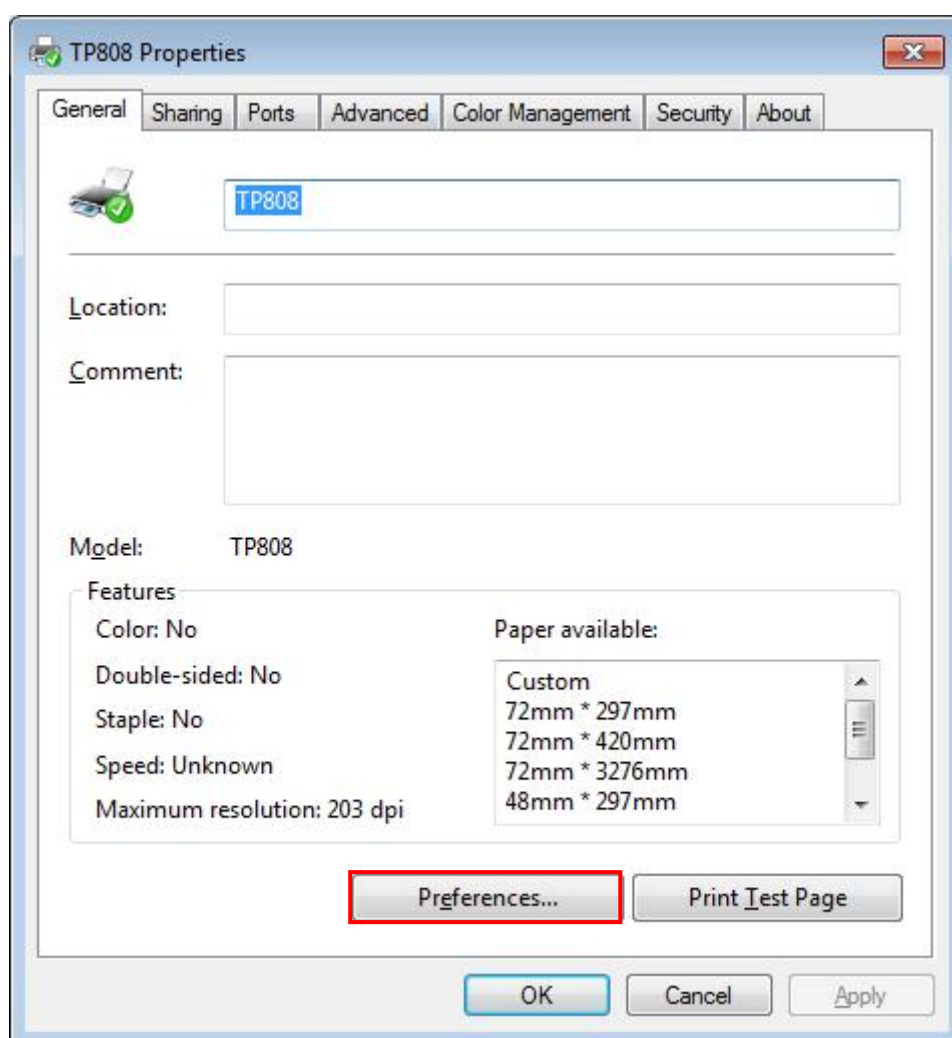
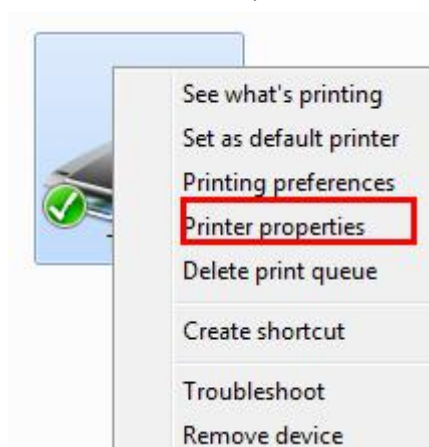


5) Return to image list to view the image number.

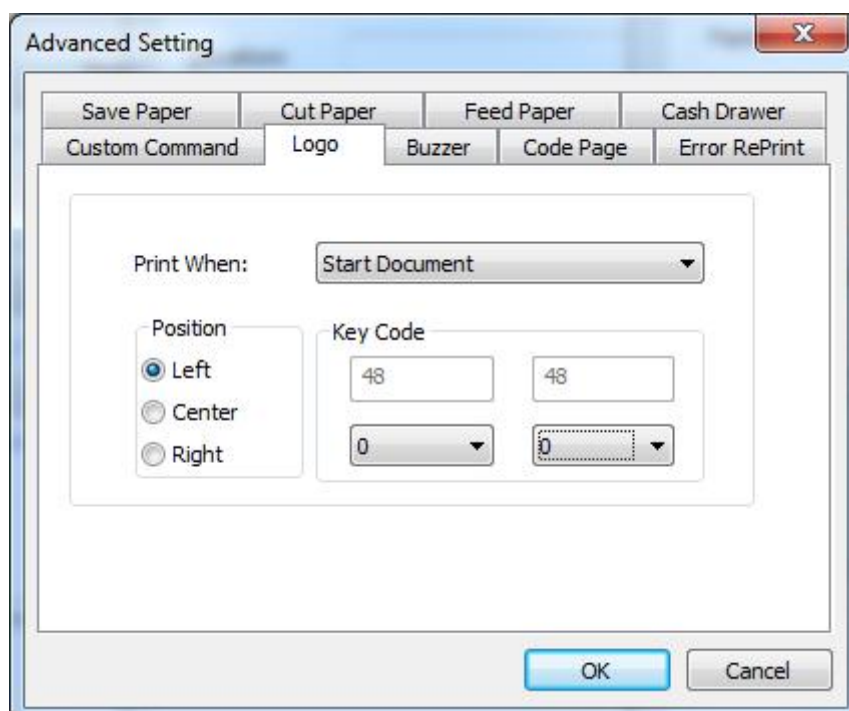
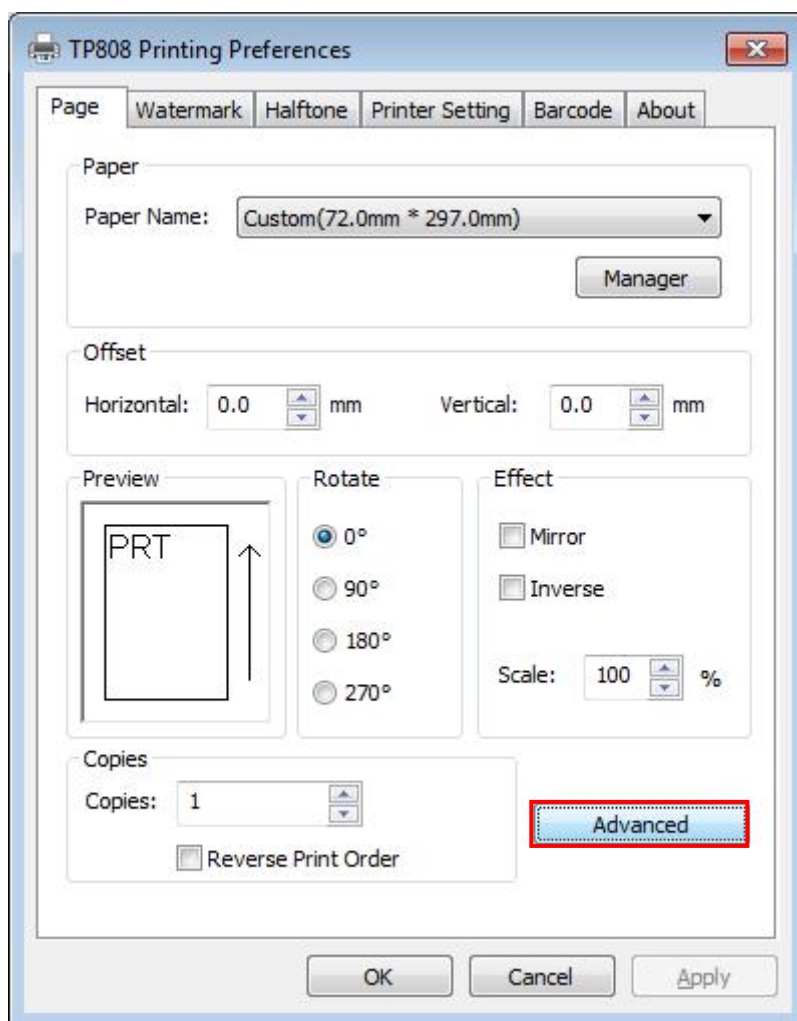
Note: each time click "Download mode of G", an image list number will be generated.



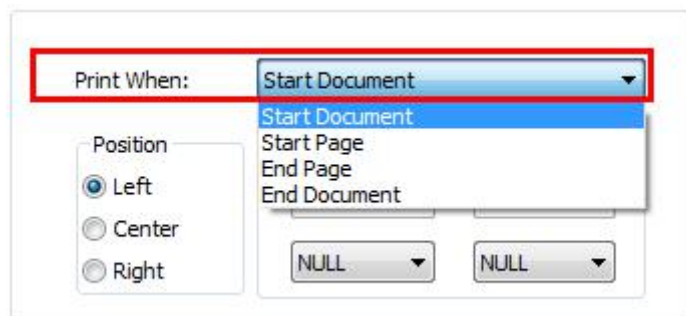
6) Select Printer properties in Devices and Printers, then click "Preference".



7) Click the “Advanced”, then click “Logo”.



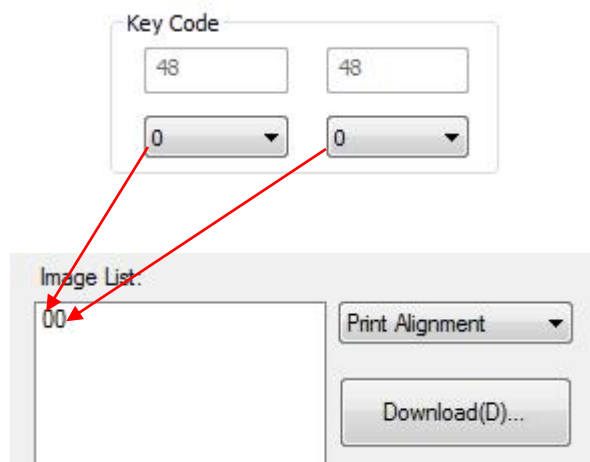
8) Set the printing time to print and click "OK". (Such as: Start Document)



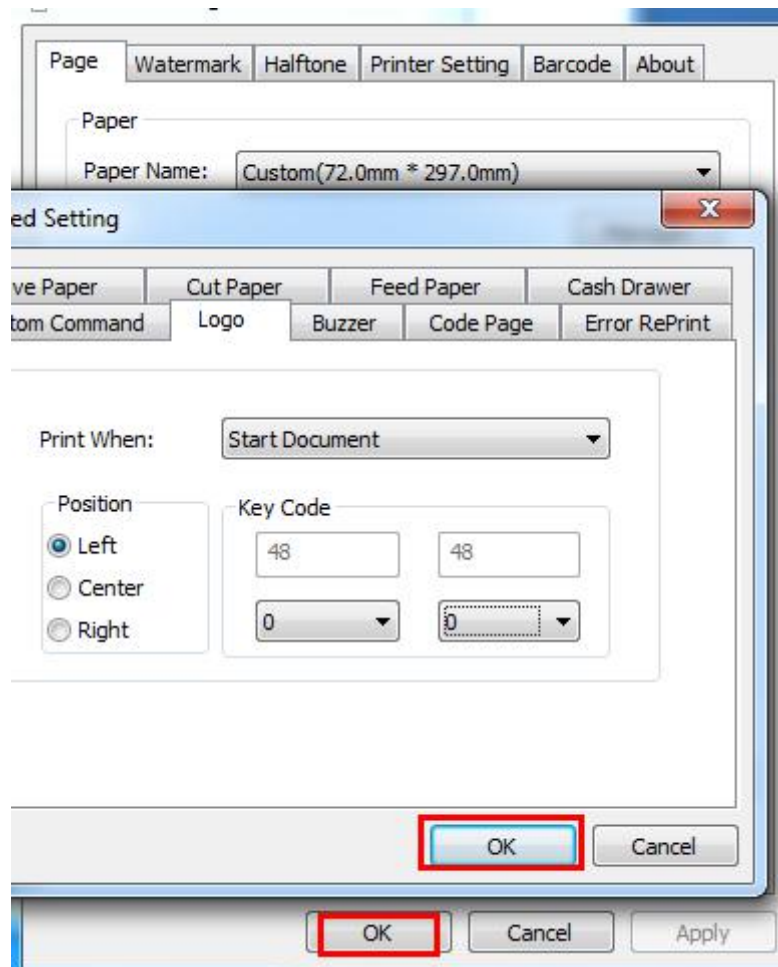
9) Return to the logo setting in driver, also select "Print left".



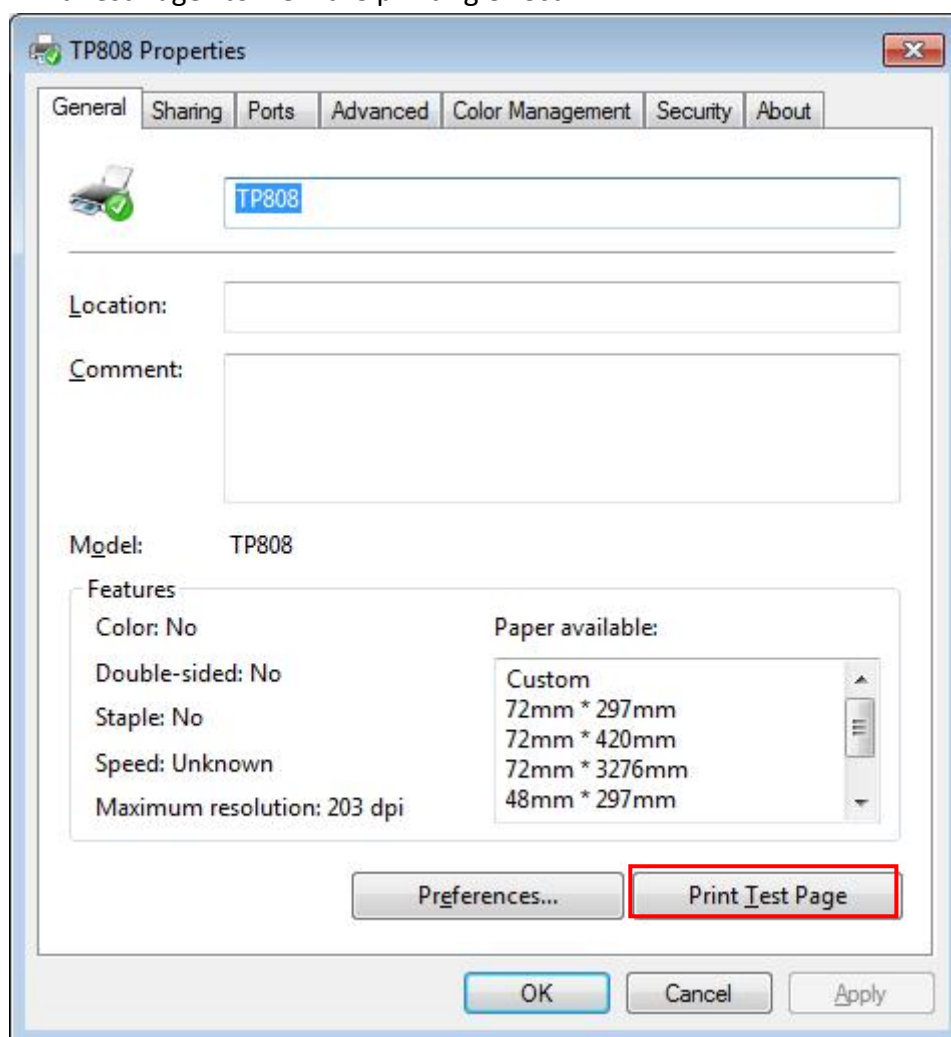
10) Set the key Code according to the image number. (Such as: 0 0)



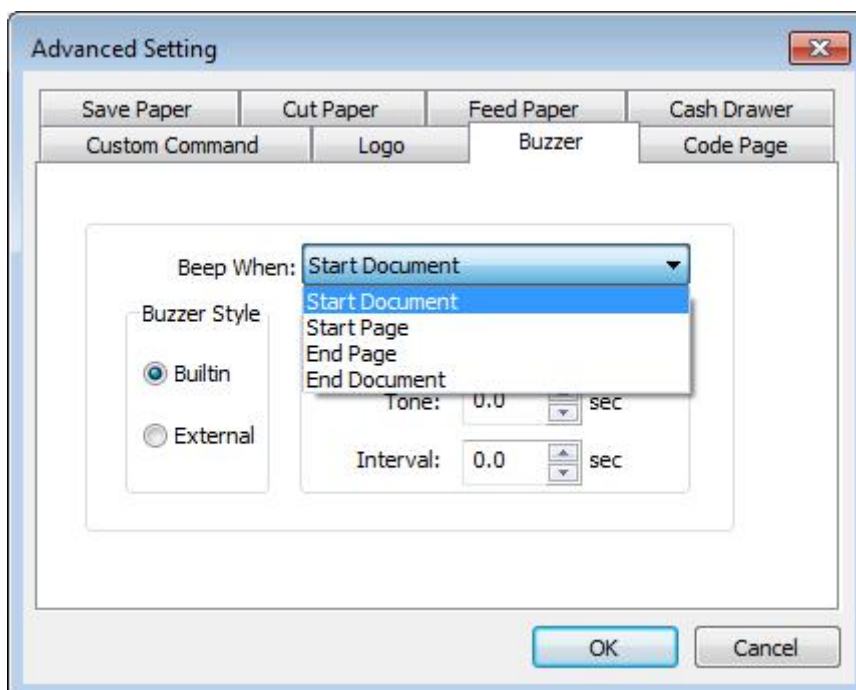
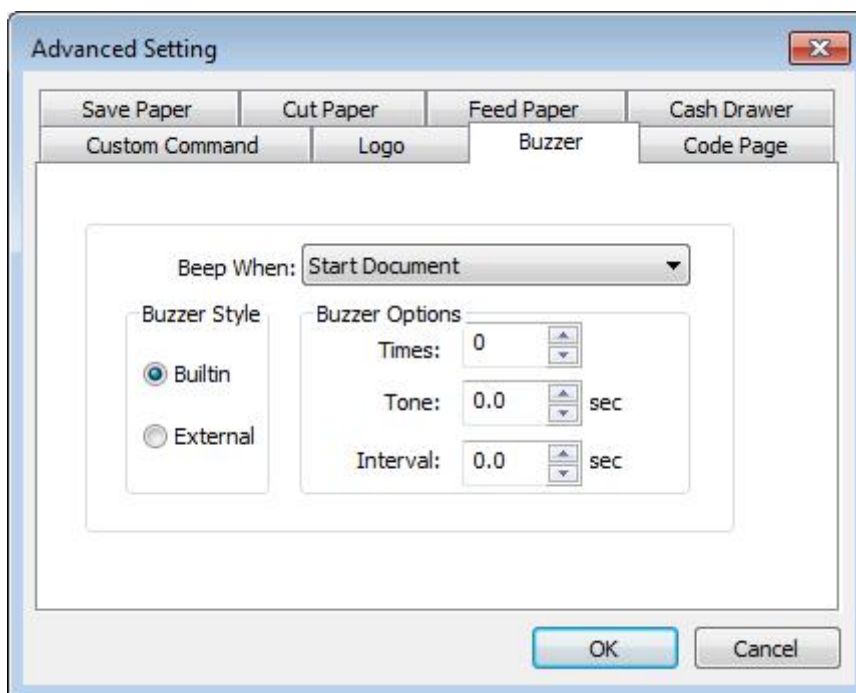
11) Then click "OK".



12) Click "Print Test Page" to view the printing effect.



6) Buzzer



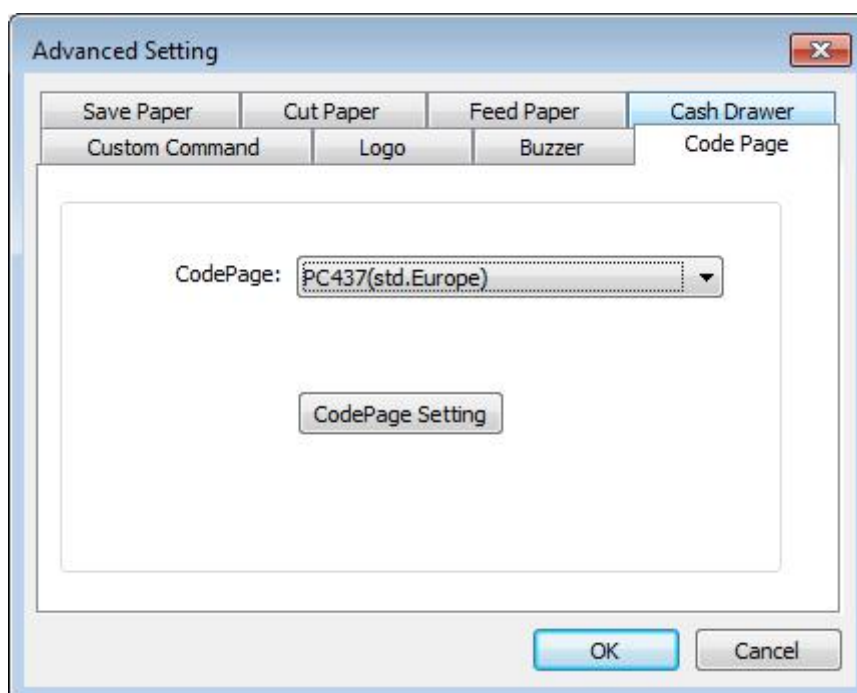
Buzzer times: 0/1/2/3/4/5

Buzzer Duration: 0.0/0.5/1/1.5/2/2.5/3.0 Sec

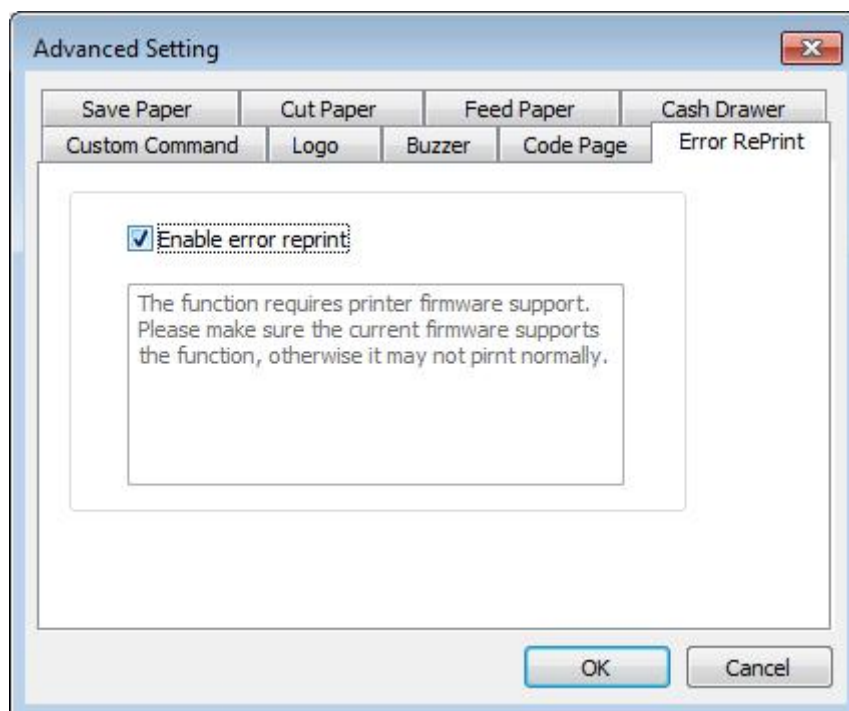
Buzzer Interval: 0.0/0.5/1/1.5/2/2.5/3.0 Sec

Note: this setting must be operated in Utility.

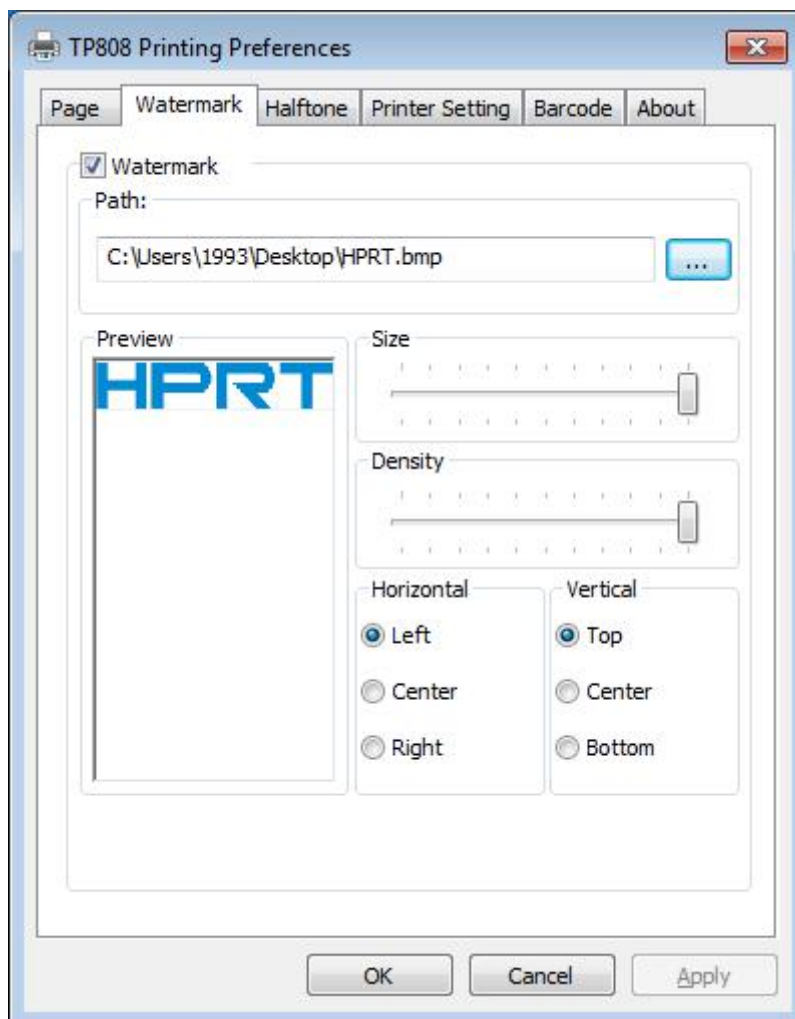
7) Code Page



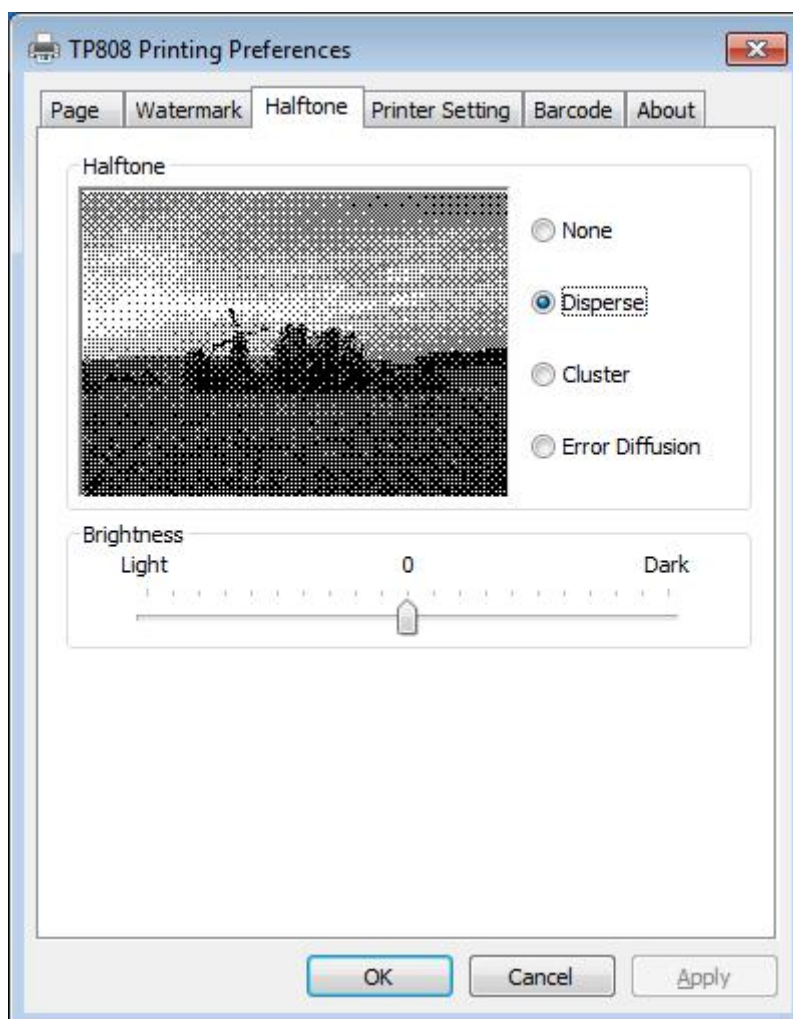
8) Error Reprint

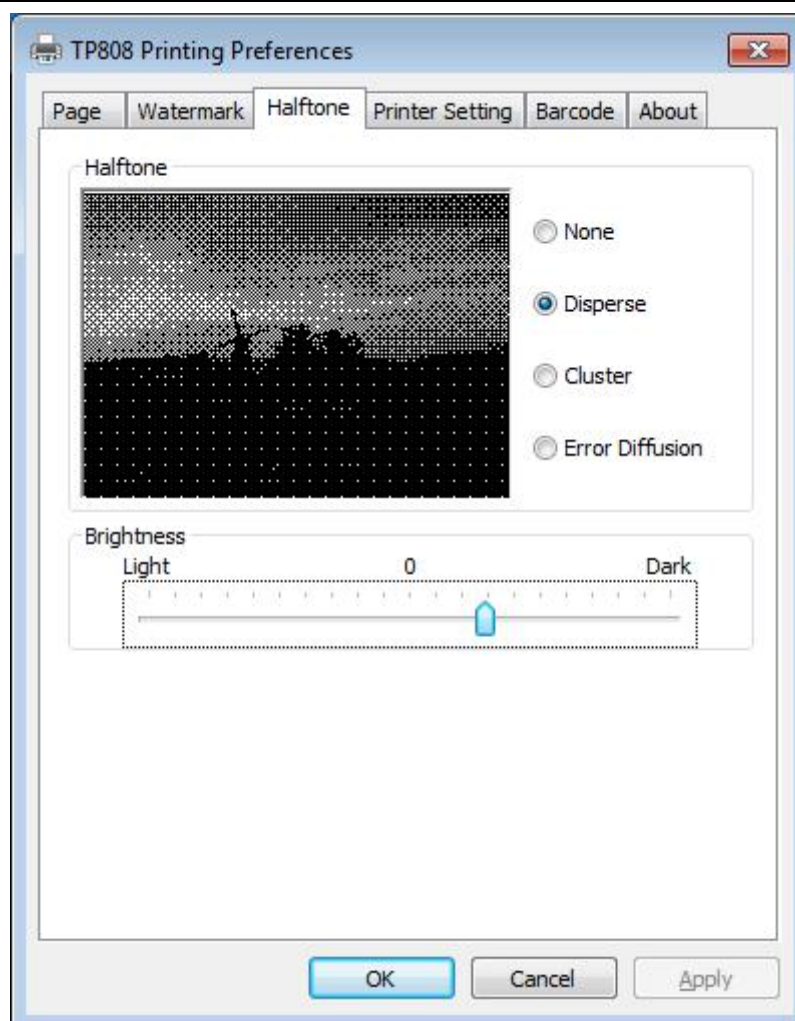


- Click "Watermark". Set watermark to print (BMP format is recommended) and click OK to save it.



4. Click "Halftone" to set the halftone.

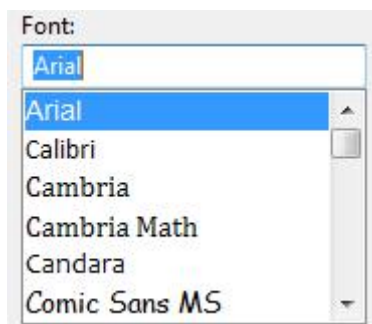
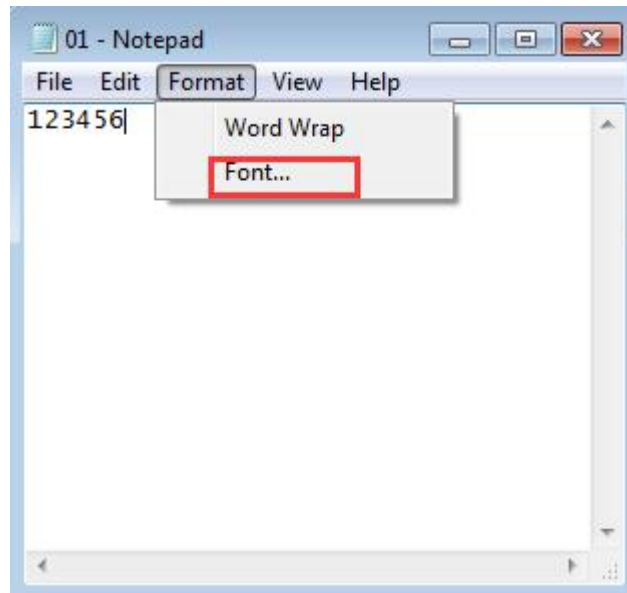




5. Set up the "Barcode"

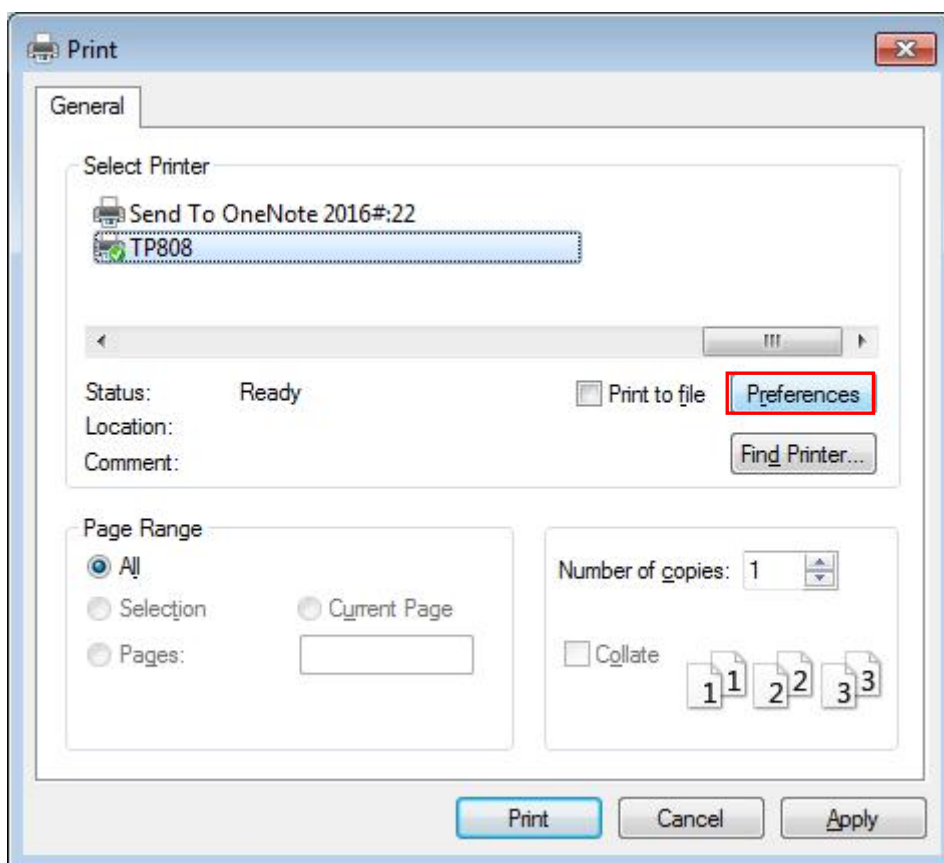
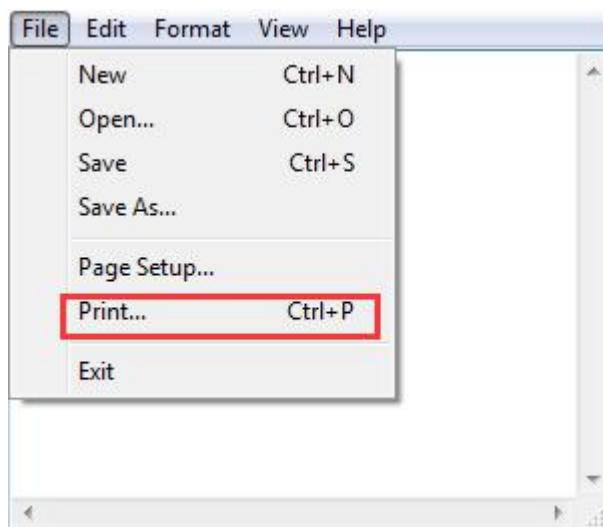
Assuming the font type of the main document is "Italics", if you want to convert the data "123456" to the barcode printing, the steps are as follows:

- Sets the data "123456" font type to a different font from the main document. Such as: Arial.



- Open the Preference.

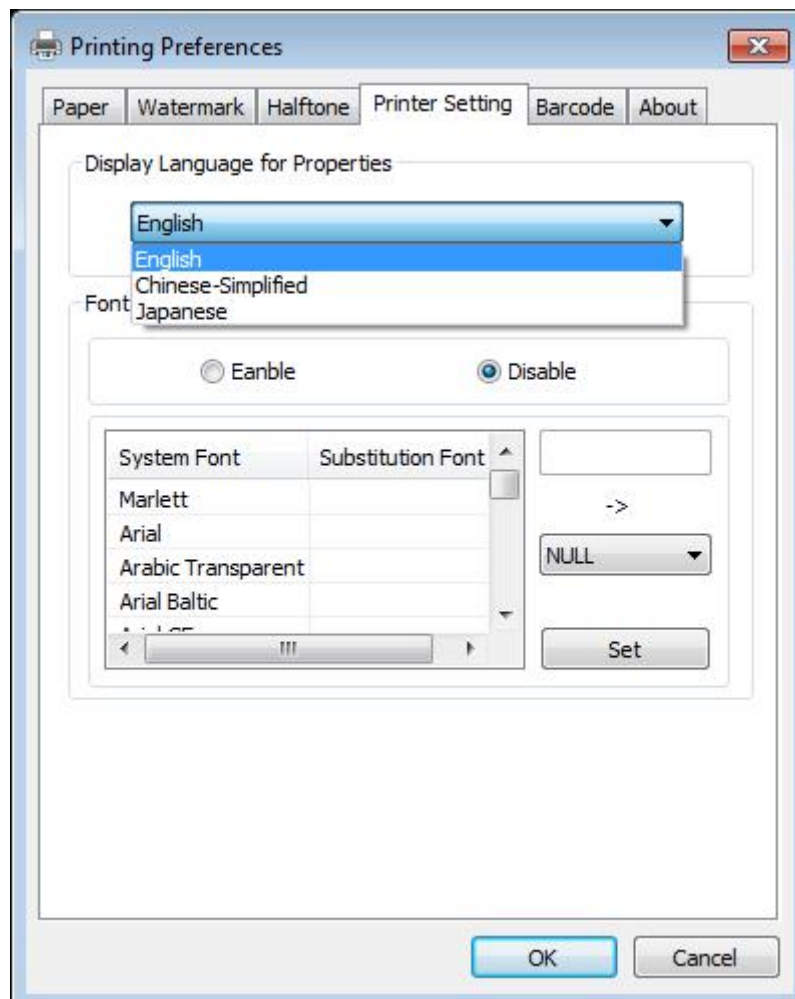
If the document is open, you can set it in the document: file-print-preferences.



[illegible]

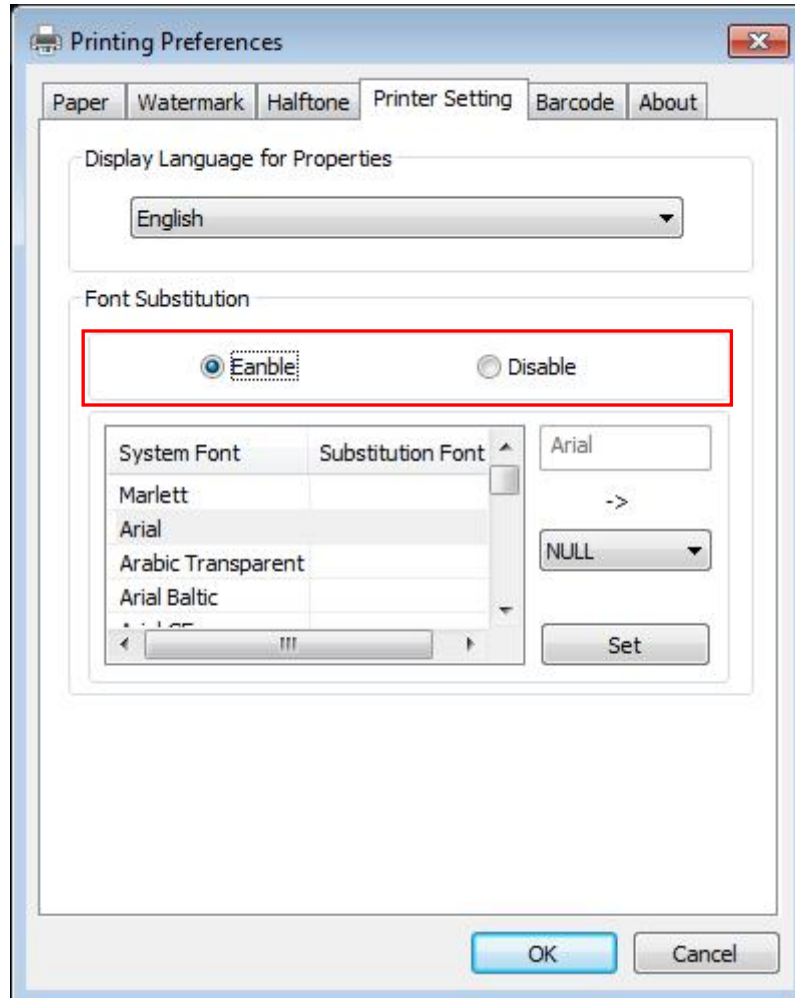
3) Click the “Printer Setting”.

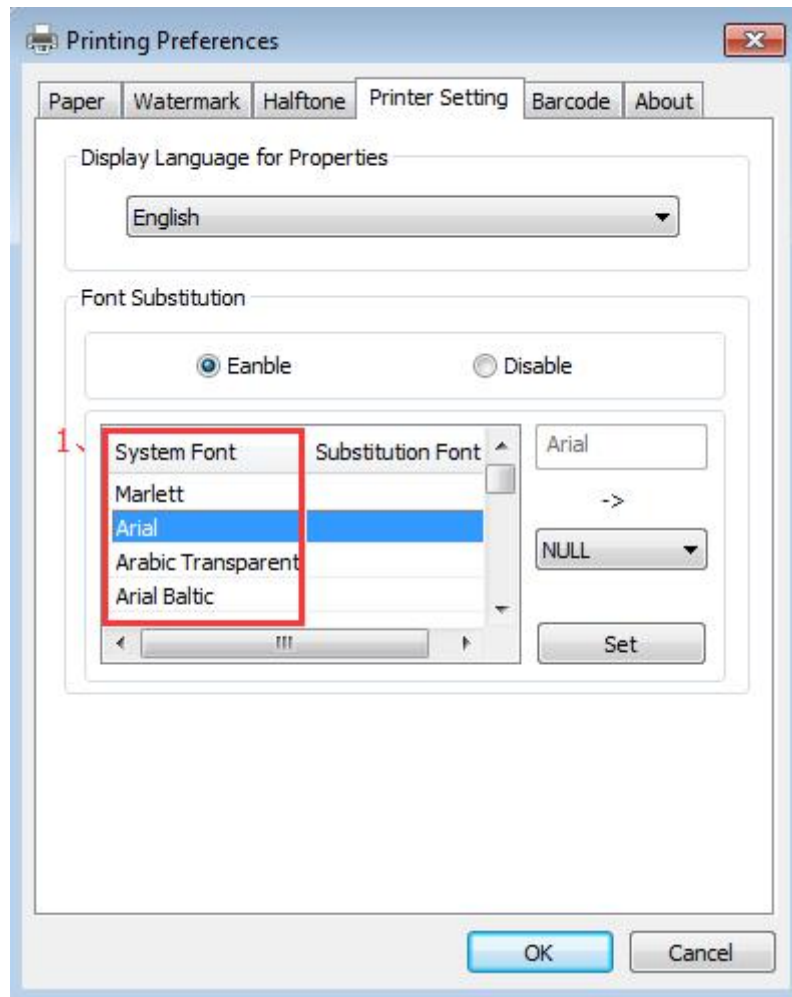
- Choose the “Display Language for Properties”

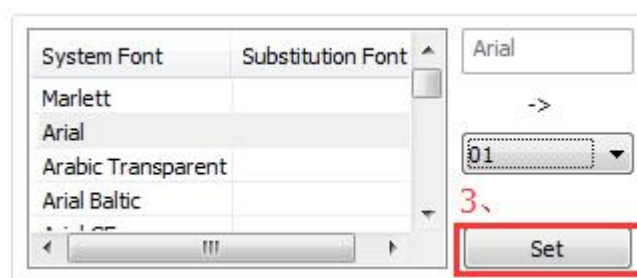
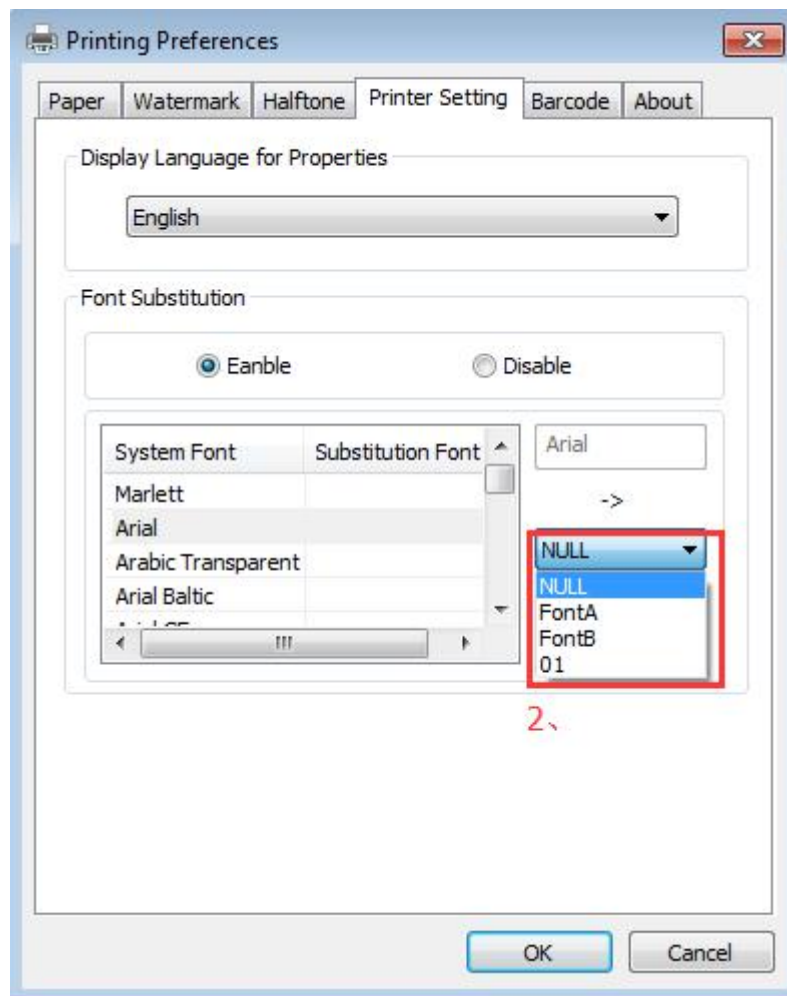


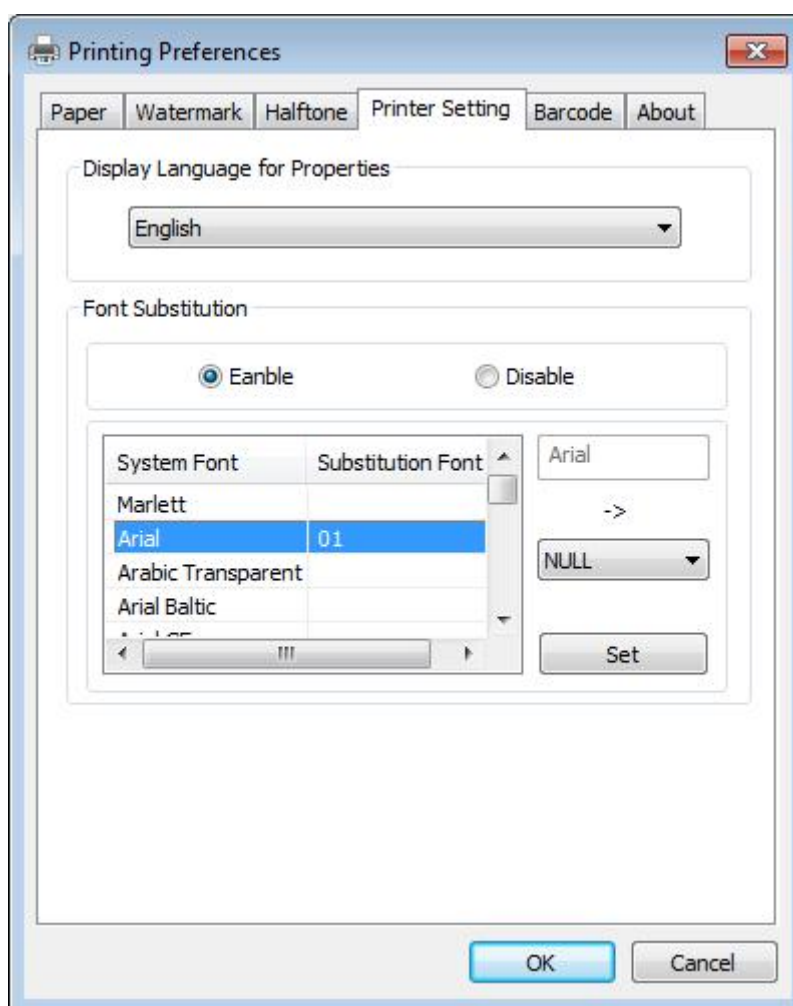
- Turn on the “Font Substitution”, select the system text need to be replaced (for example, Arial), and then select the font you want to replace (for example, 01) and click Settings, and the replacement font will display "01".

the steps are as follows:



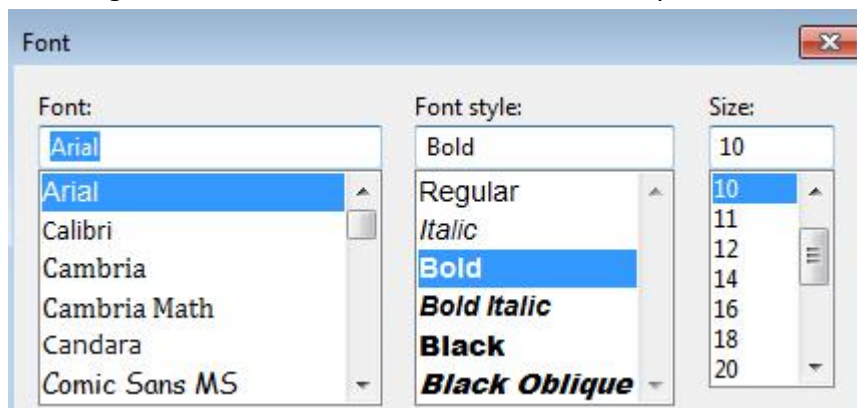




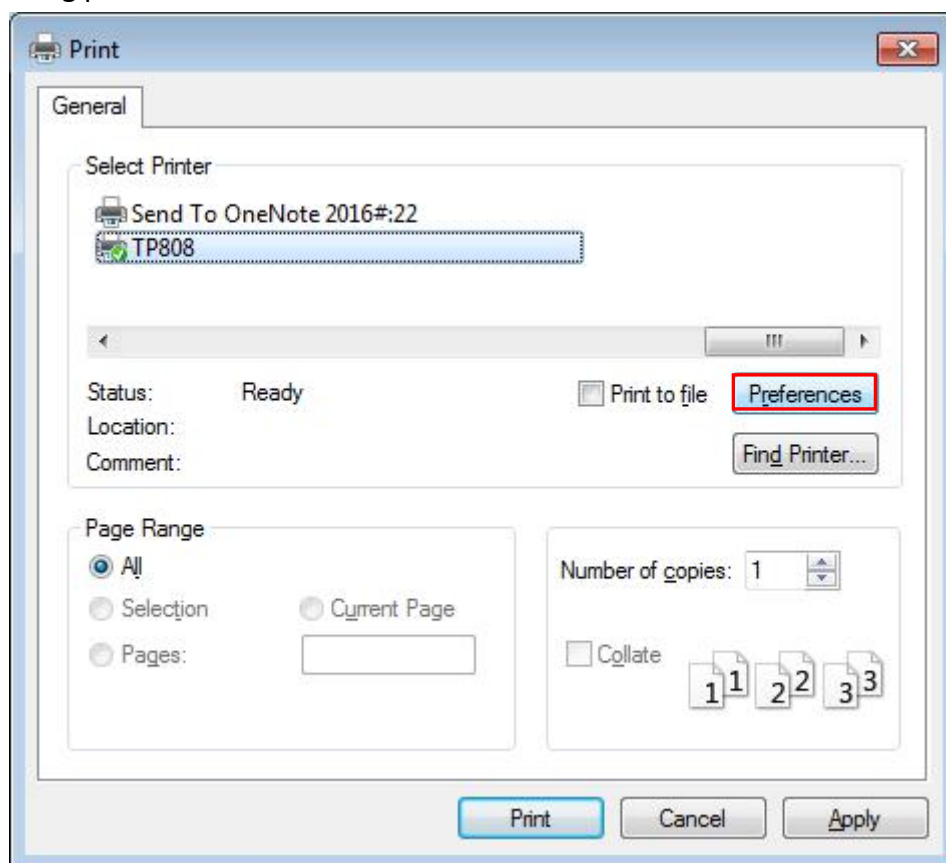


- If you do not have a barcode set, the action is as follows:

1) Suppose you change the size of the data "123456", for example:

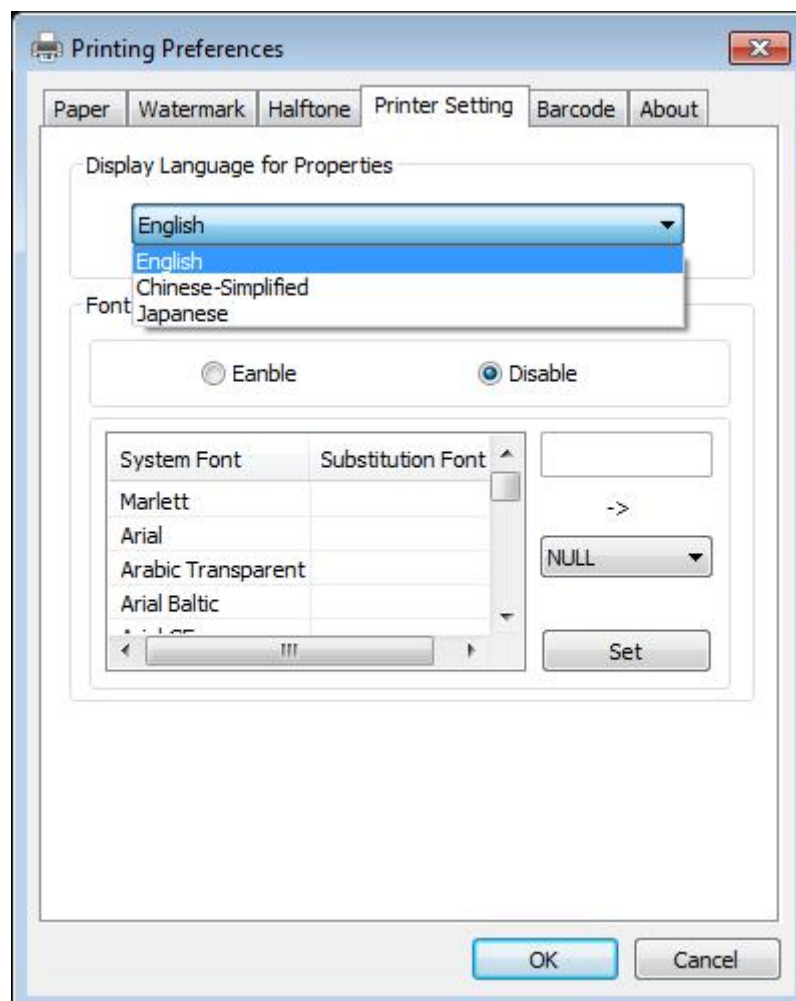


2) Set the Printing preferences.

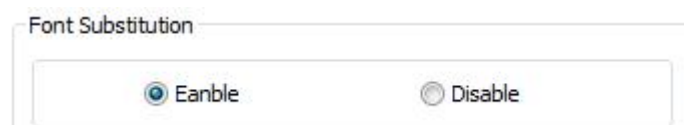


3) Click the "Printer Setting".

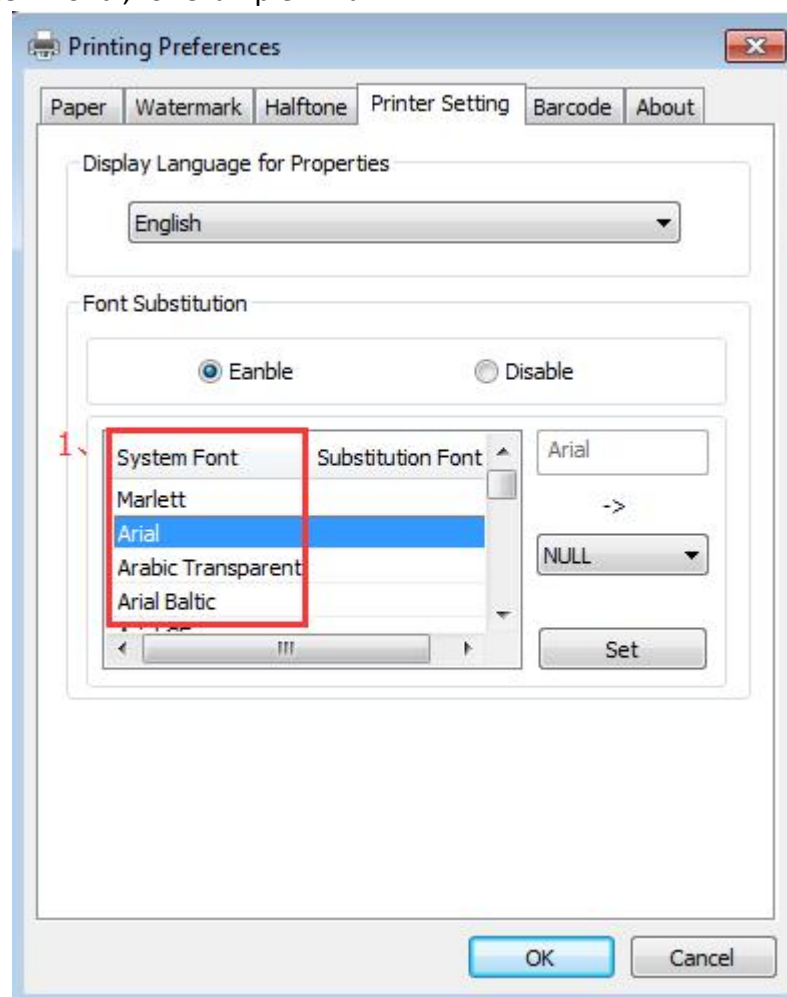
- Choose the "Display Language for Properties".



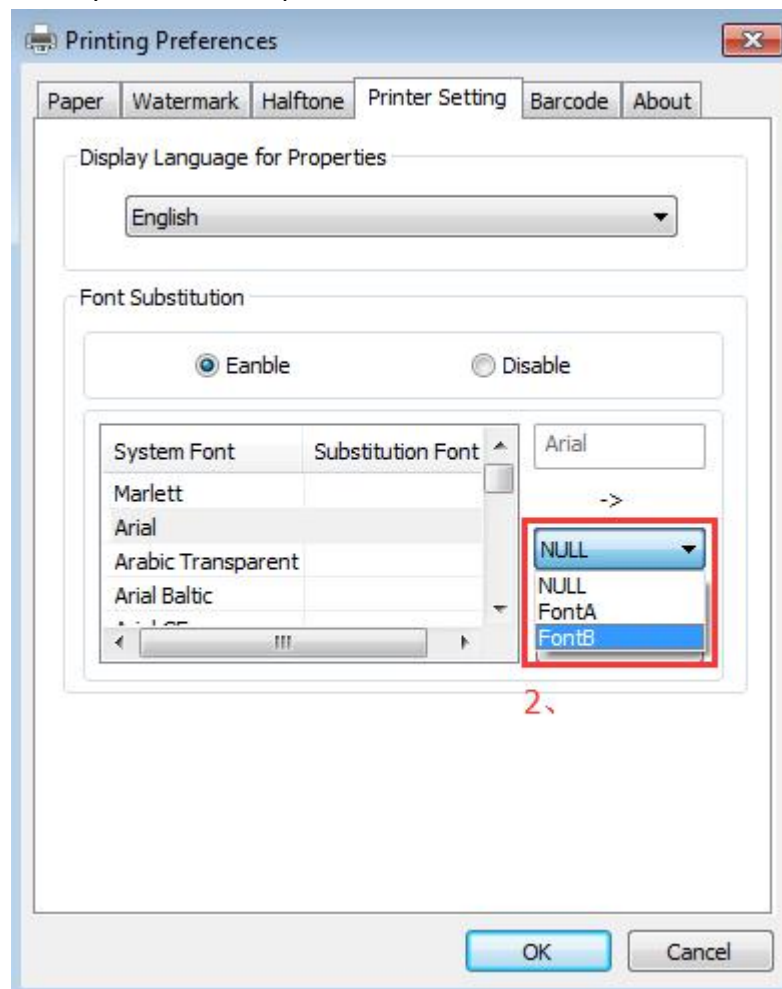
4) Turn on the "Font Substitution".



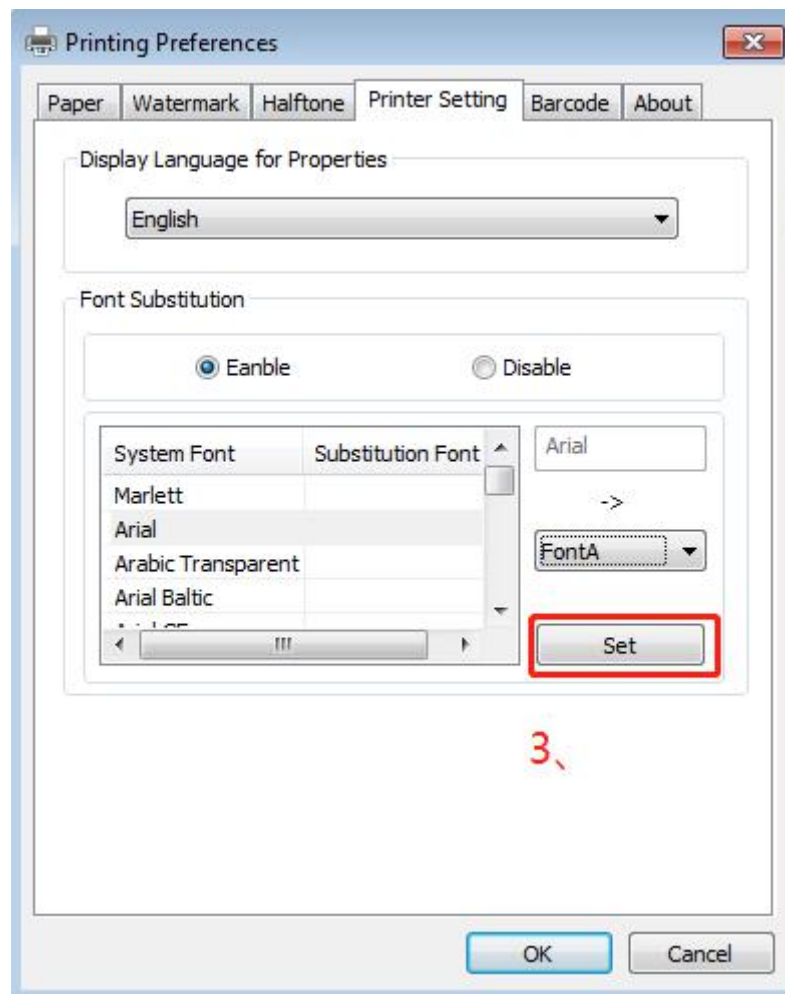
5) Select the “System Font”, for example: Arial.

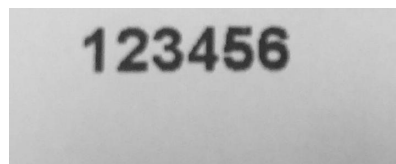
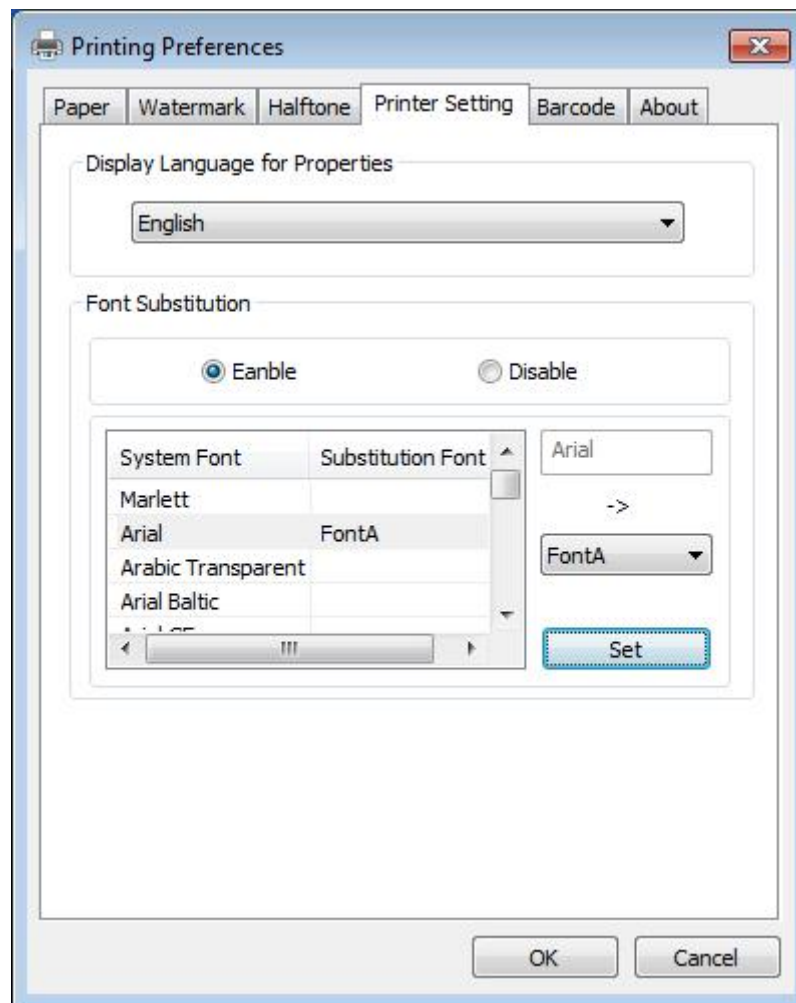


6) Select the font to that you went to replace.



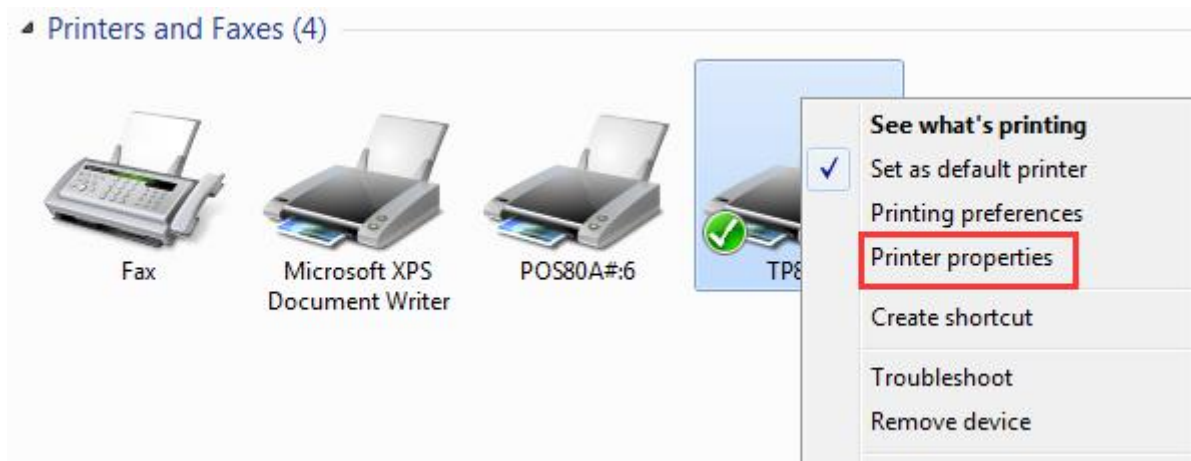
7) Click "Setting".



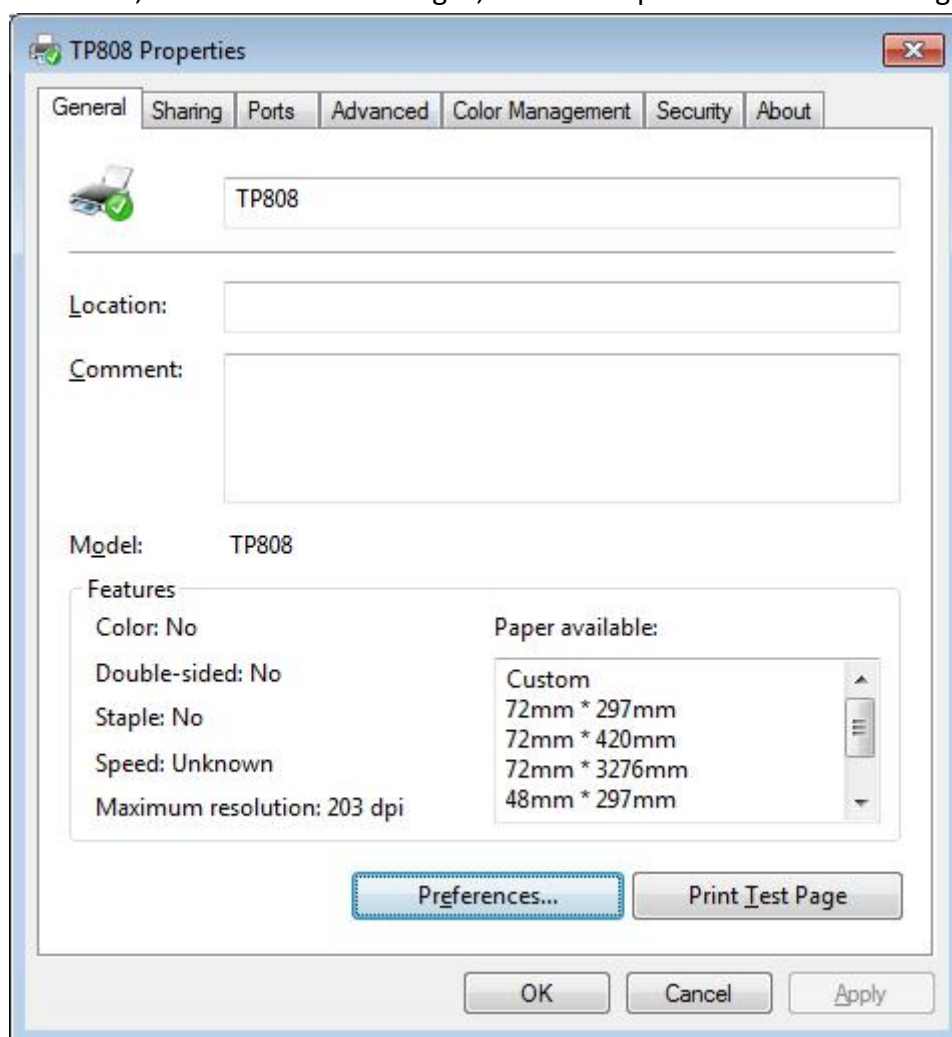


5.2. Other Settings

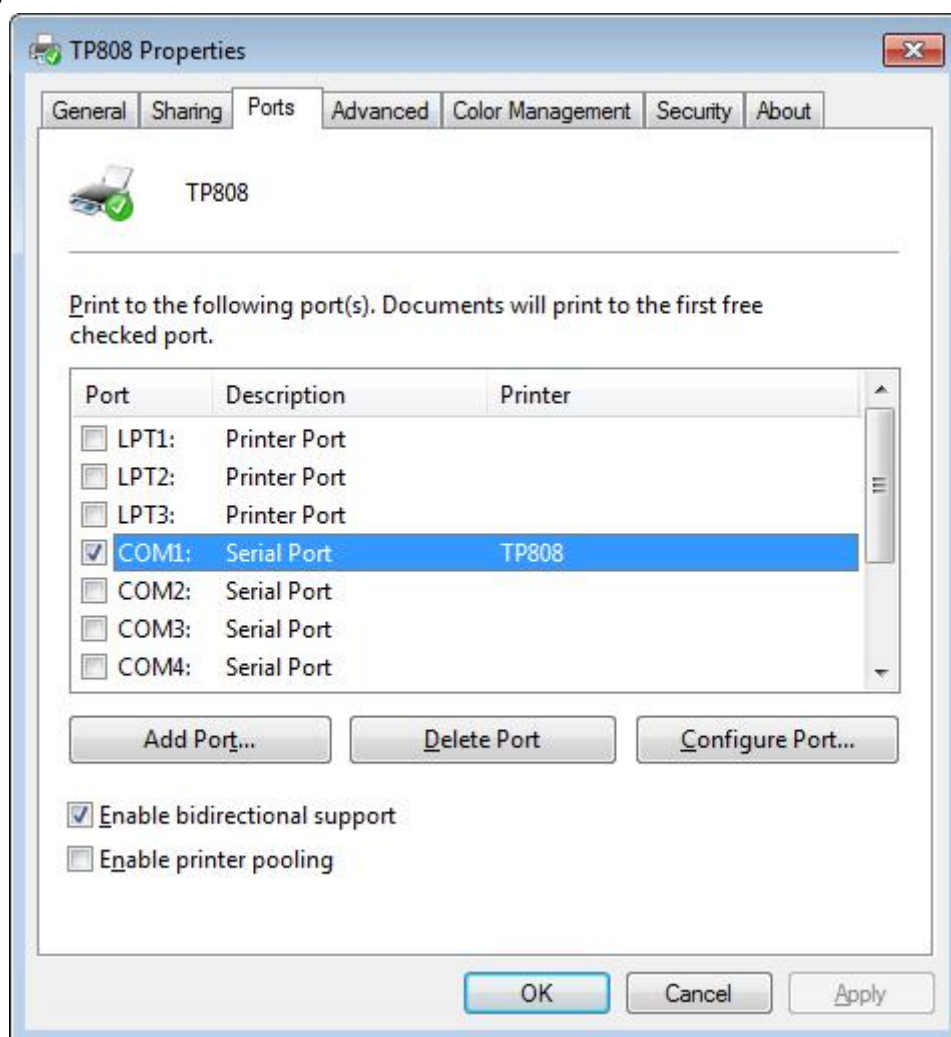
1. Click "Start" → "Devices and Printers". Right click "TP808" and choose "Printer properties".



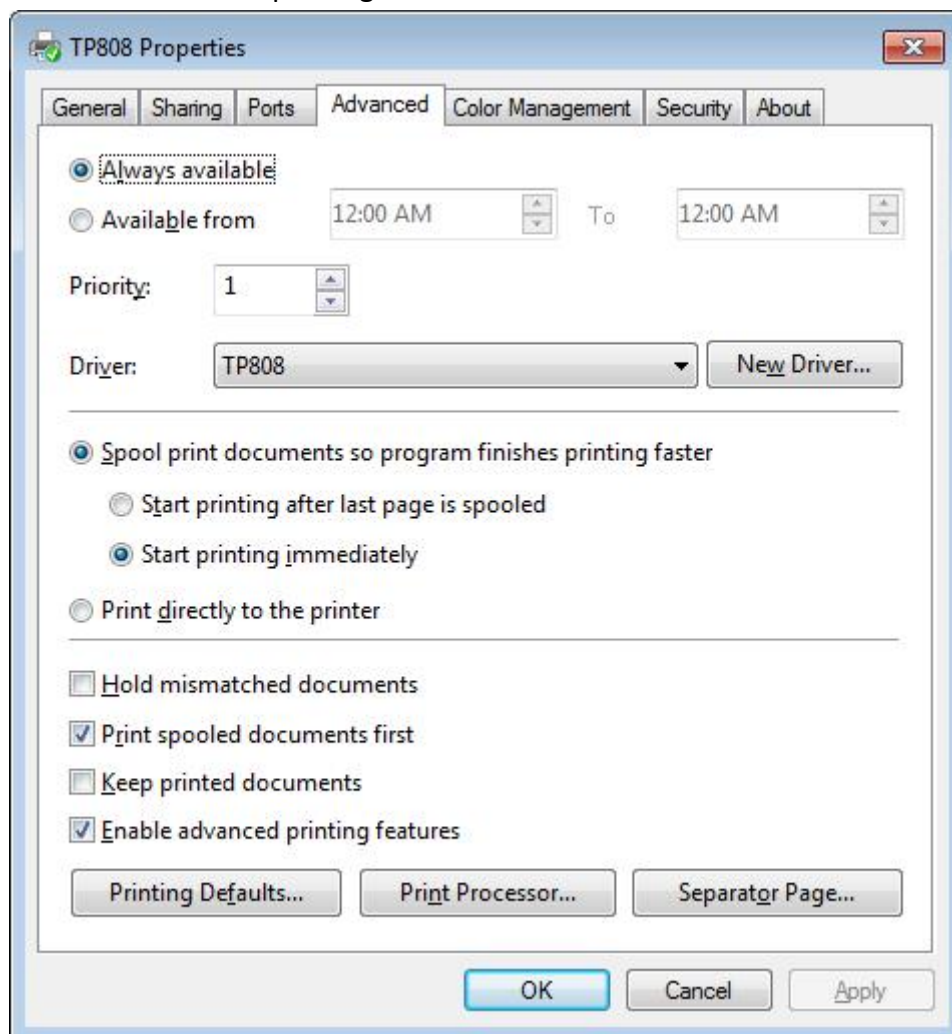
2. Choose "General", click on "Print Test Page", then it will print the current settings.



3. Setting the “Ports”

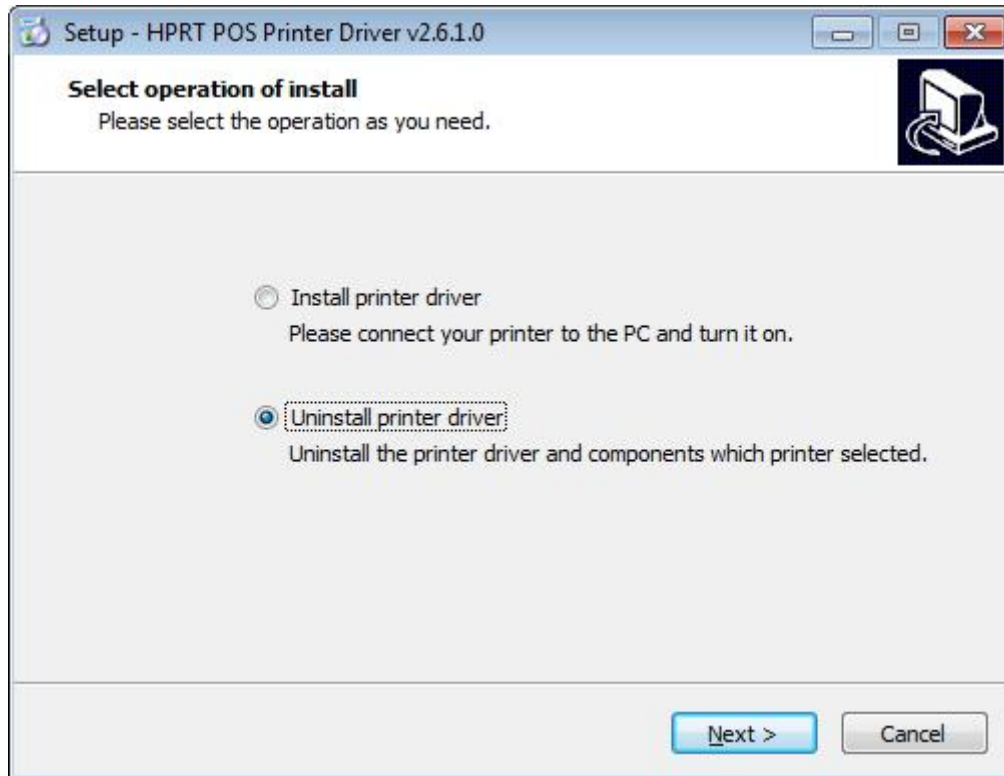


4. Click “Advanced” to set the printing time.

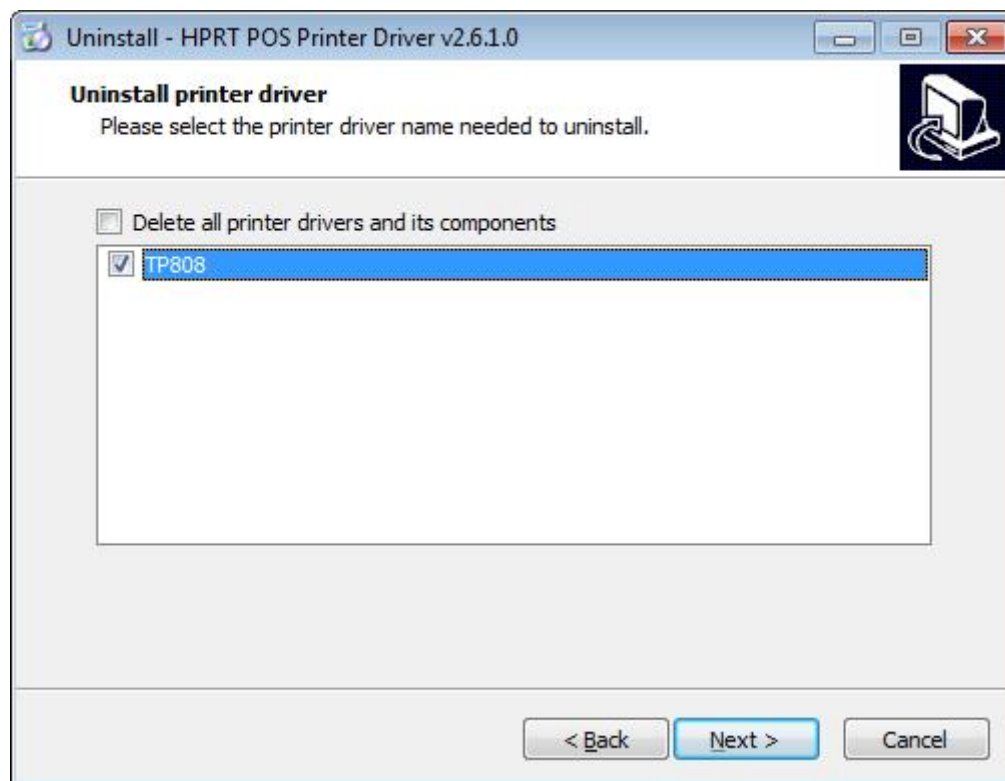


6. Uninstall Windows Driver

- 1) Double click Windows Driver.
- 2) Choose “Uninstall printer driver”, then click “Next”



- 3) Choose "TP808", then click "Next"



7. Specification

Resolution:

TP808: 203×203dpi

Paper Size:

70*297mm

72*420mm

72*3276mm